

# KPBSD, Collaborating to Meet the Individual Needs of our Students



**PRESENTATION TO DISTRICT ADMINISTRATION  
SEPTEMBER 29, 2010**

**STEVE ATWATER, SUPERINTENDENT**



# Items for Today



- **Continuous improvement**
- **District News**
- **Avoid the steep hill**

# Continuous Improvement-Plan, Do, Evaluate, Refine



## Step I -Plan

**Establish Baseline Information- a way to compare where you are with where you were**

Apex  
Application

Curriculum  
Audit

Student  
Information

## Step II -Do

**Create plans to address identified area of weakness**

# Apex Application



Reviewed district from 7 angles (Leadership; strategic planning; student, stakeholder, market focus; measurement, analysis and knowledge management; workforce focus; process management, results)

## Summary of recommendations

Lack of processes

Lack of measurement in a variety of areas

Stakeholders-input and communication is hit and miss

Assessments do not measure all of mission, e.g., creative, productive learners

# Curriculum Audit-Main Findings



- Lack of alignment between what is written and what is happening-some teachers working independent of district curriculum
- Lack of policy to guide practice
- Expectations (by Superintendent) for schools are not clear enough
- Instruction is mostly in the lower domains (knowledge and comprehension) of Bloom's Taxonomy

# Curriculum Audit-Recommendations



curriculum

monitoring

finance

**District is planning improvements in each of these three areas**

**Will take several years, 6? to complete plans**

# Curriculum



- **Curriculum Management Plan**
  - **Written**
    - ✦ Alignment of assessments, instructional strategies, resources, scope and sequence
  - **Taught**
    - ✦ Instructional process
    - ✦ Data driven instruction
    - ✦ Tighten PD
  - **Tested**
    - ✦ Assessment development

# Monitoring



- **Policies to require closer oversight of what is being taught-Frameworks will help move us in this direction**
- **Policies to require common assessment information**



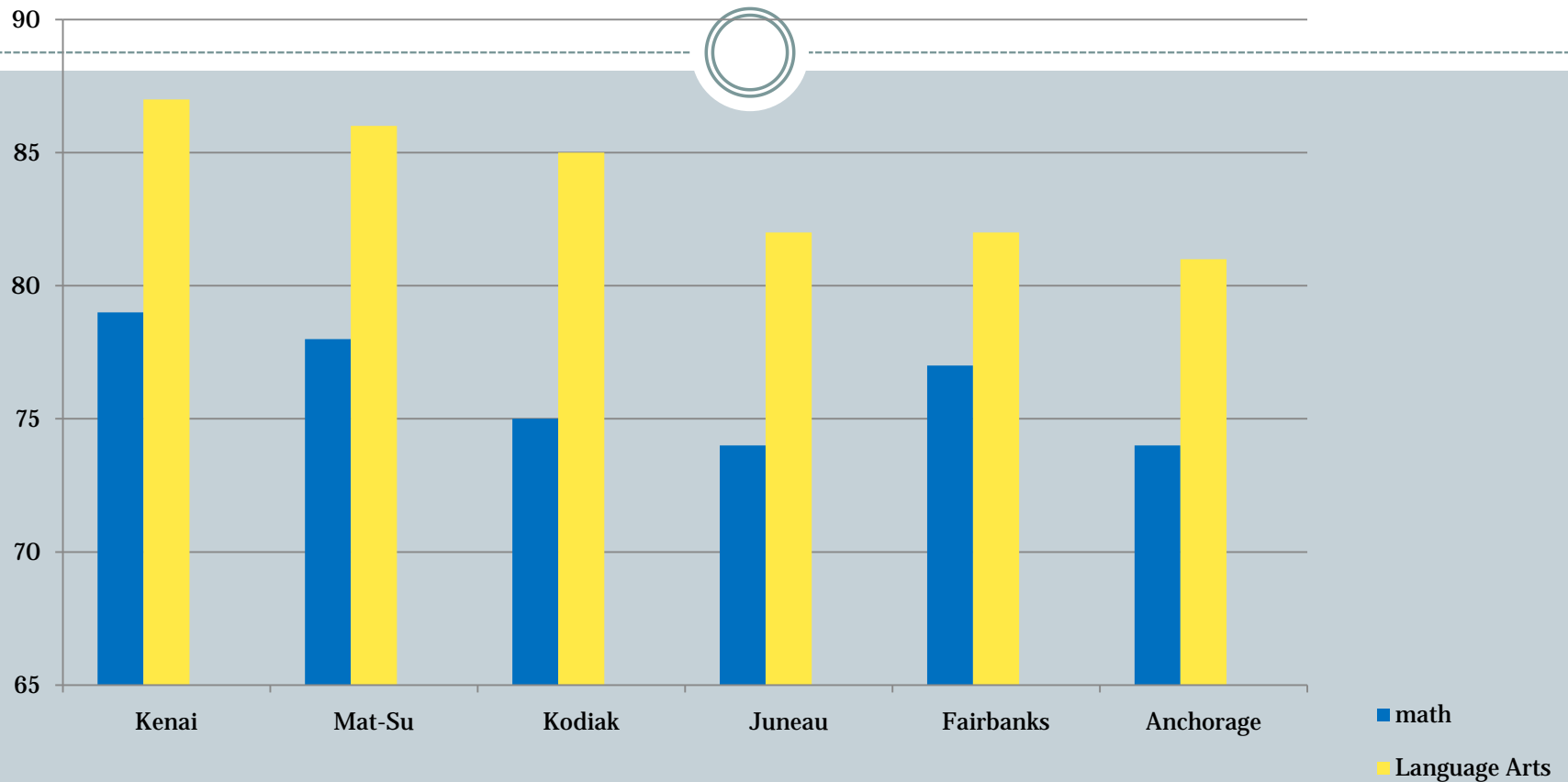
# Finance



- **Quality control with spending- how do we know that we are being as efficient as we can with our expenditures?**
- **Devote money to where it is needed most**
- **Policy to ensure that curriculum and instruction are number one with budgeting**

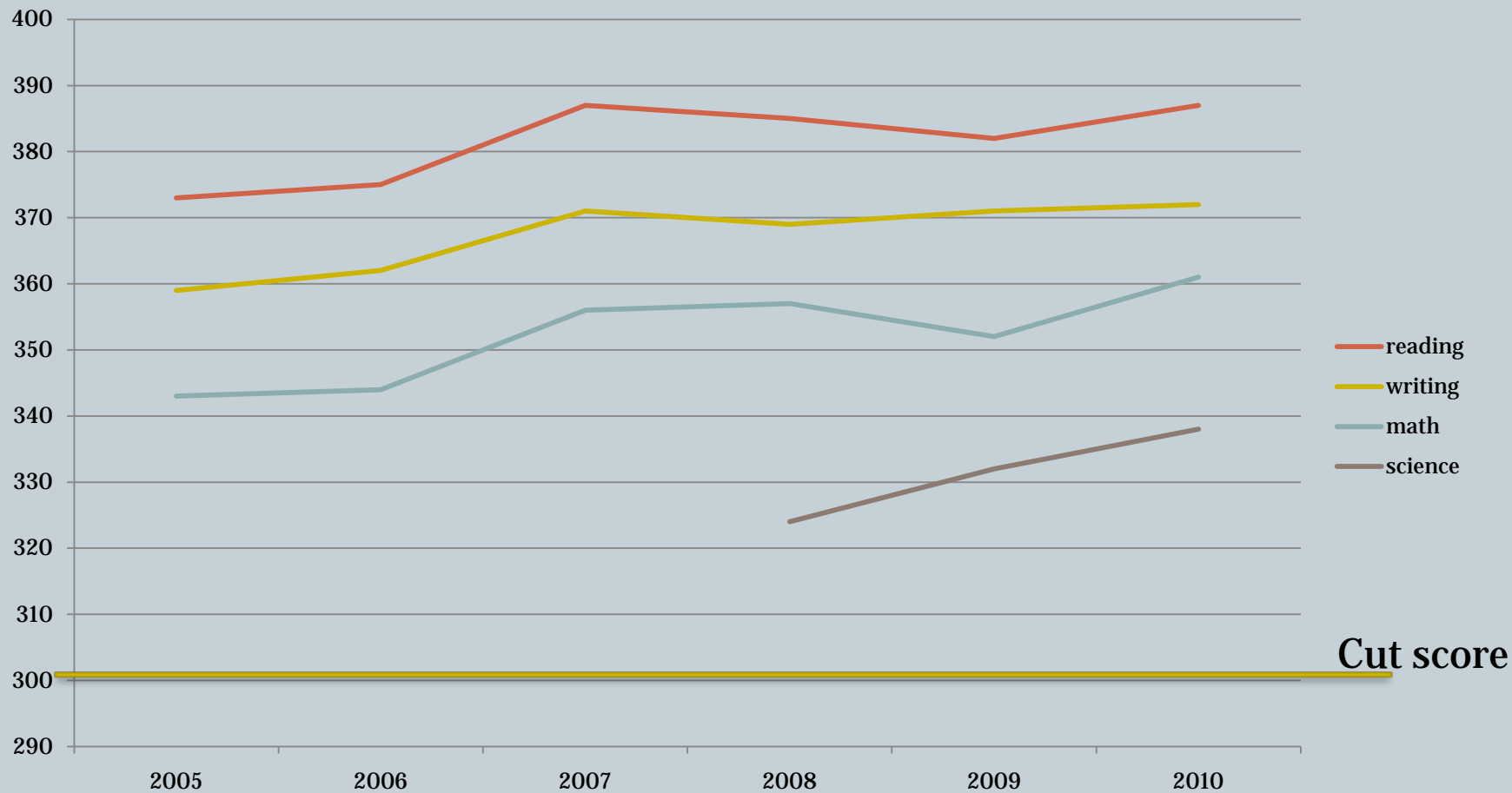
# Comparing KPBSD with other large districts

## 2009-2010 District SBA Percent Proficient

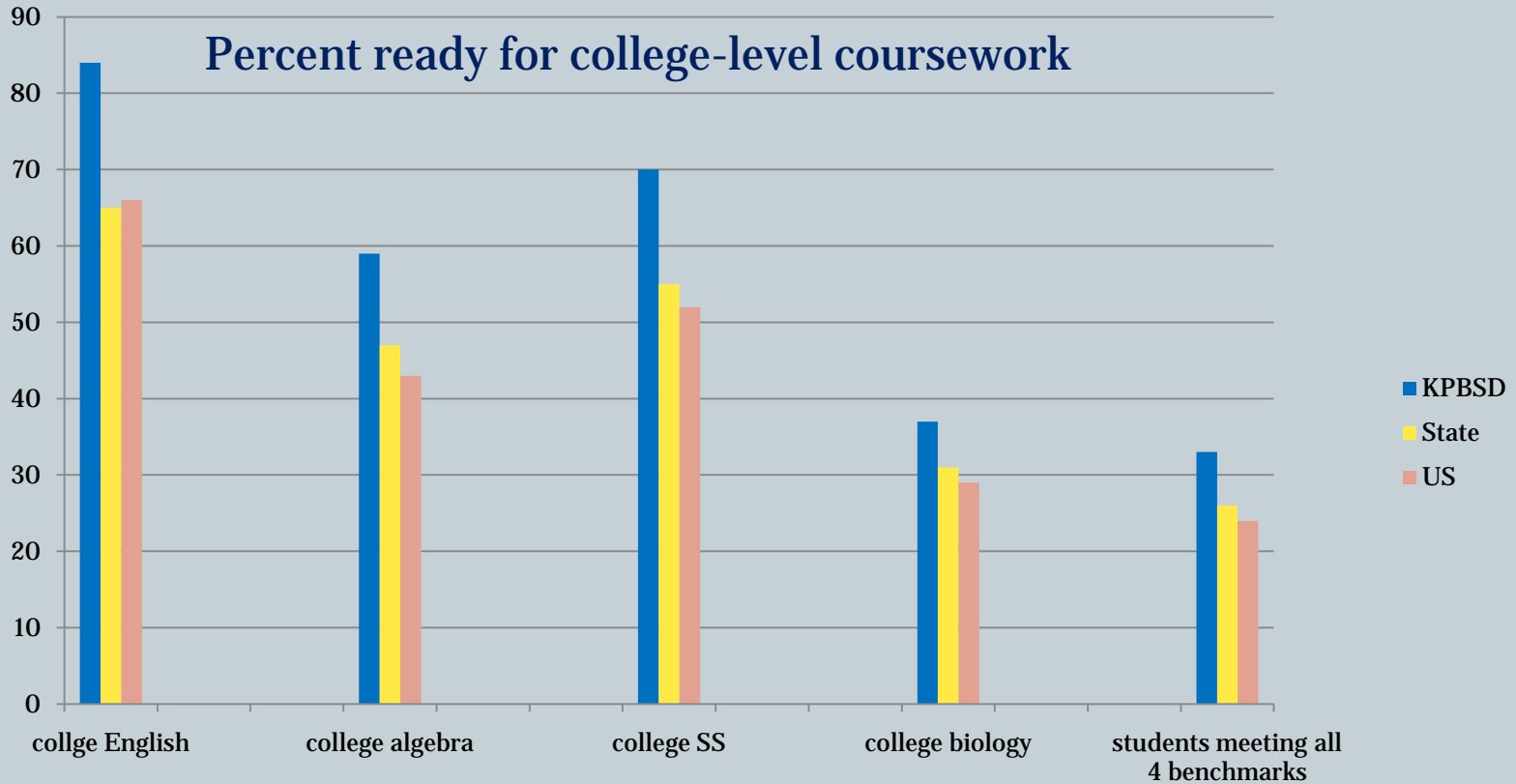


# Average Scale Score of KPBSD Students on SBAs

## 005-10



# Comparison of KPBSD's Students on the 2010 ACT Exam





# District News

# Employer Summit



- **Three recommendations**
  - Teach the soft employment skills
  - Do a better job with transitioning students (elem to middle school, middle school to high school, high school to what is next)
  - District take the lead with school-business partnerships



- **Parent Training 10-7, agenda is on line**
- **Form II forms due to me on Monday**
- **Bond**
- **Student of the week**

Do what you can to keep the hill from getting too steep



Be smart, be strong, be brave