



Superintendent John O'Brien
October 22, 2019
Quarterly update to Kenai
Peninsula Borough Assembly

KENAI PENINSULA BOROUGH SCHOOL DISTRICT

Where do you want your learning to take you and how can KPBSD help you get there?

KENAI PENINSULA BOROUGH SCHOOL DISTRICT STRATEGIC PLAN 2017 - 2022

OUR MISSION

Empower all learners to positively shape their futures.

OUR VISION

KPBSD will inspire all learners to pursue their dreams in a rigorous, relevant and responsive environment.

GUIDING PRINCIPLES

Every KPBSD student will graduate prepared for their future.

A strong, positive relationship with all students is the foundation of a quality education in KPBSD.

A KPBSD diploma guarantees a student is ready for life, college, and career.



READY

- ♦ **Life:** KPBSD students will demonstrate life readiness skills by possessing resiliency, grit, and perseverance to achieve their goals with a growth mindset that empowers them to approach their future with confidence.
- ♦ **College:** KPBSD students will demonstrate college readiness by meeting rigorous academic indicators and, or post-secondary assessment scores.
- ♦ **Career:** KPBSD students will demonstrate career readiness by identifying a career interest and meeting employability or experiential benchmarks.

#Ready

#Rigor

#Relevance

#Responsive

RIGOR *All Students will achieve high levels of academic growth*

- ◆ Students will learn in a performance-based instructional model.
- ◆ Student growth and success will be determined through multiple measures of learning.
- ◆ Students will have “accessible anywhere” curriculum without dependencies on particular technologies.

RELEVANCE *Experience a personalized learning system*

- ◆ Students will learn in a flexible instructional model that is fluid and developmentally appropriate for all.
- ◆ Students will experience varied instructional strategies that target individual strengths and interests of each learner.
- ◆ Students will develop a personalized learner profile as demonstrated in their portfolio.
- ◆ Students will be given opportunities to develop healthy lifestyles and make healthy choices.
- ◆ Students will be provided instructional opportunities in partnership with parents and community that extend growth, exploration and learning beyond the classroom.

RESPONSIVE *Be immersed in a high quality instructional environment*

- ◆ Prioritize strong, positive relationships with all students to support their social and emotional needs.
- ◆ Teachers will utilize a repertoire of high-yield instructional strategies that are research-based, high quality instructional strategies, within the instructional environment.
- ◆ Develop a culture of continuous innovation within all schools across the district.
- ◆ Professional learning is embedded and ongoing, resulting in continuous growth and innovation.
- ◆ Develop a highly reliable and efficient organization through online and concurrent collaboration tools.

Goals 2019-2020

 **Develop policies and a budget plan**, which promote the guiding principles of the five-year strategic plan

 **Create partnerships** to foster and strengthen positive relationships, which increase student educational opportunities

 Support further improvements in the areas of **positive school climate, safety and social-emotional wellbeing**

KPBSD Board of Education Goals



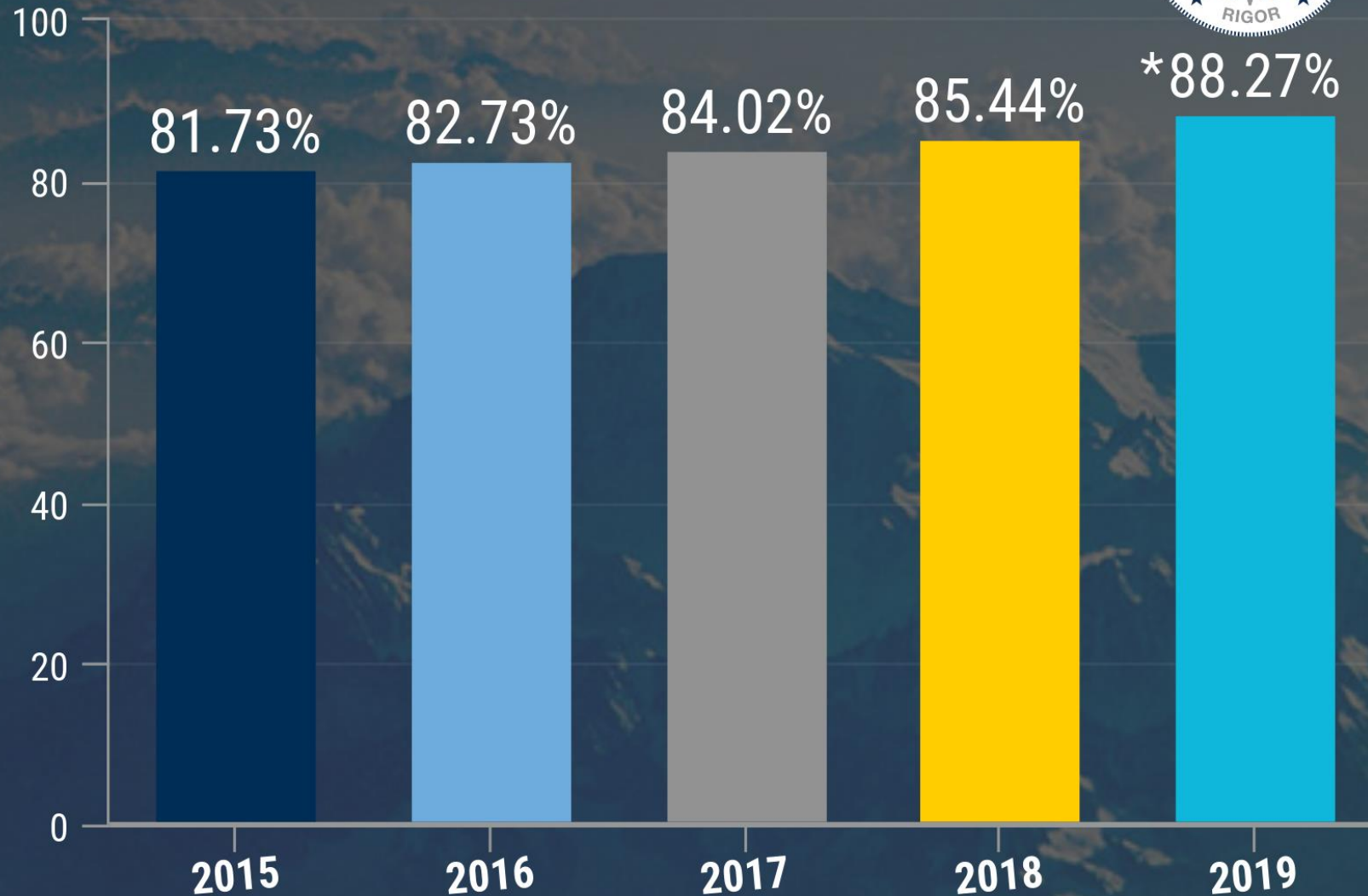
2019-2020

- **Public Education**
- **Safe Schools**
- **Career and Technical Education (CTE)**
- **Timely, sustainable, adequate education funding plan that addresses inflation**
- **Health Care Costs**

KPBSD
Board of
Education
State priorities



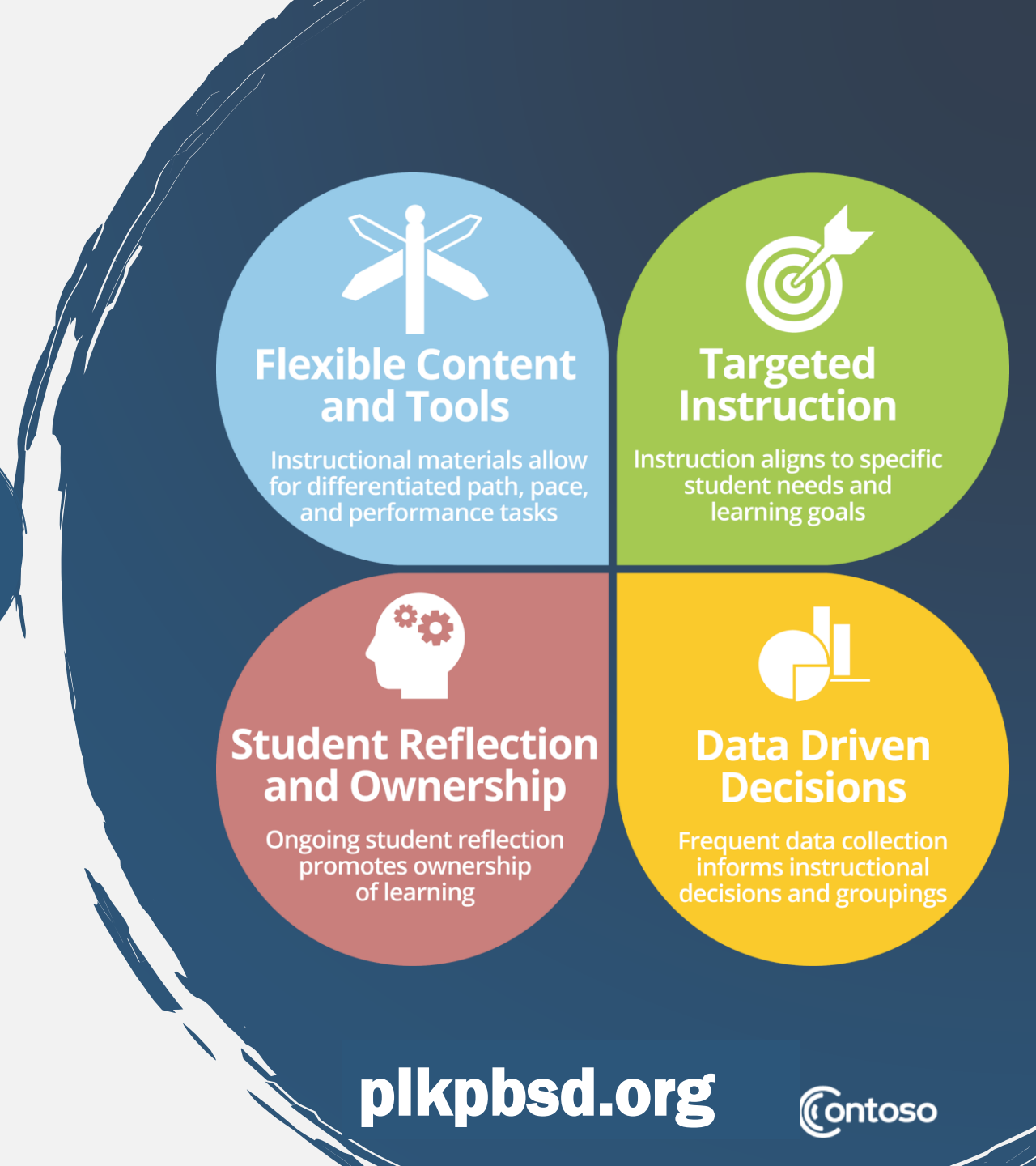
KPBSD Graduation Rate



plkpbsd.org



**“Where do you want your learning
to take you and how can KPBSD
help you get there?”**



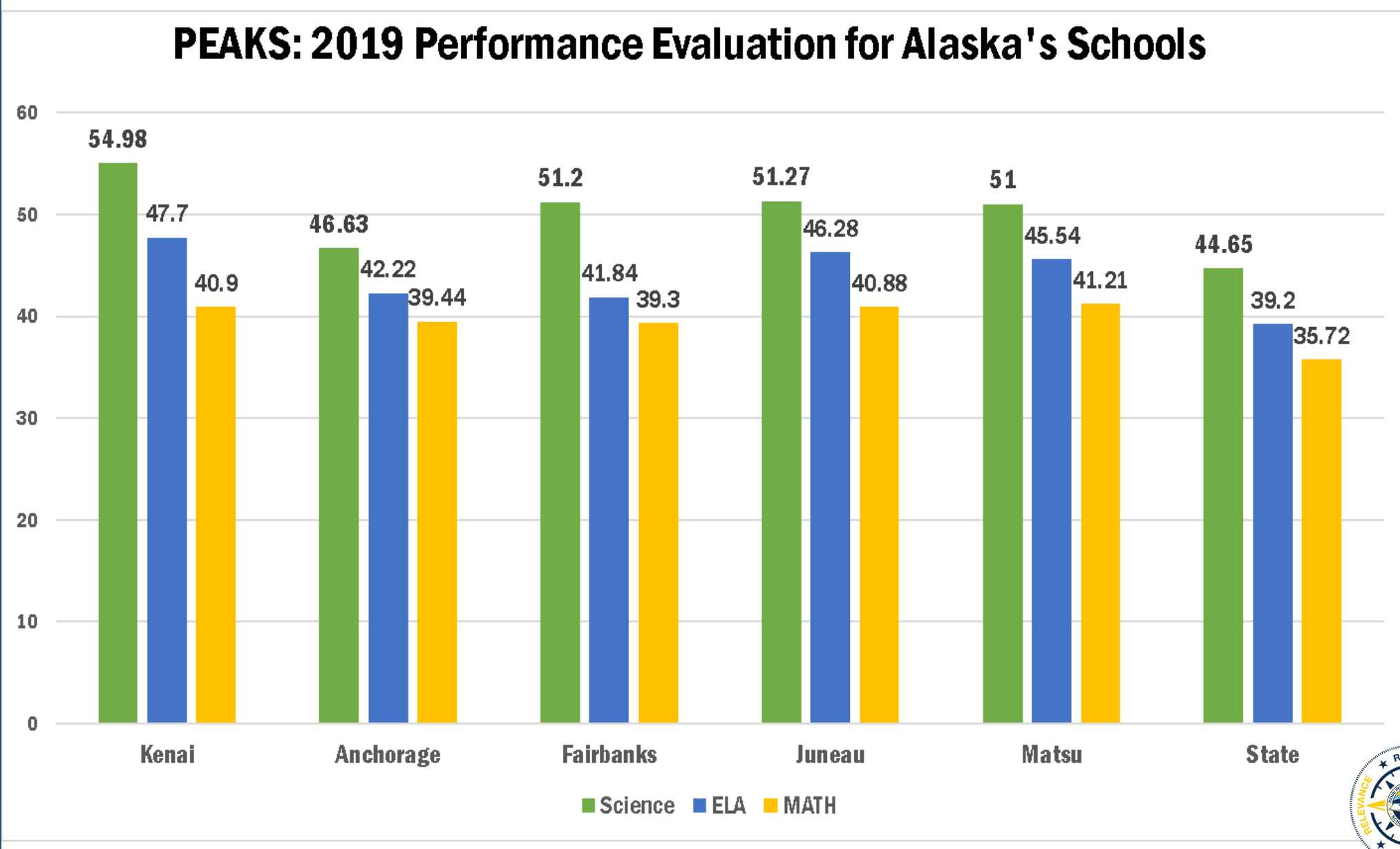
plkpbsd.org



PEAKS Assessment: Science, English-Language Arts, Math

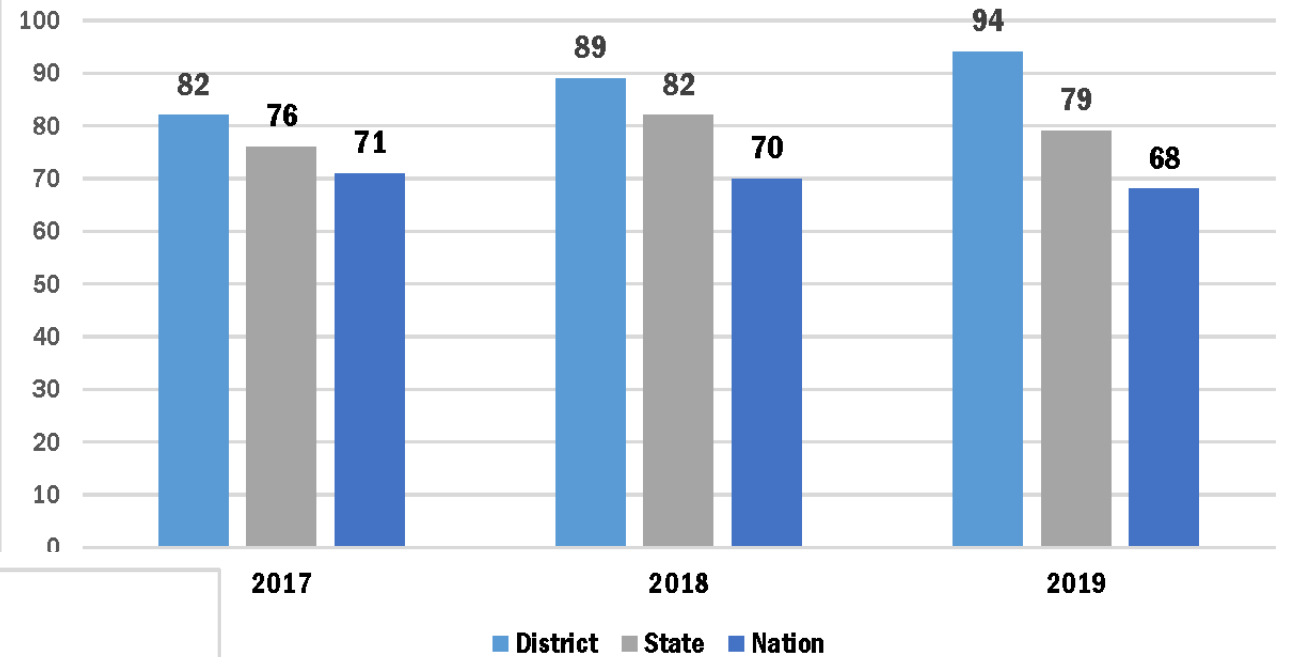
2019 PEAKS in
Alaska large
school
districts:

- Kenai
- Anchorage
- Fairbanks
- Juneau
- Matsu
- State

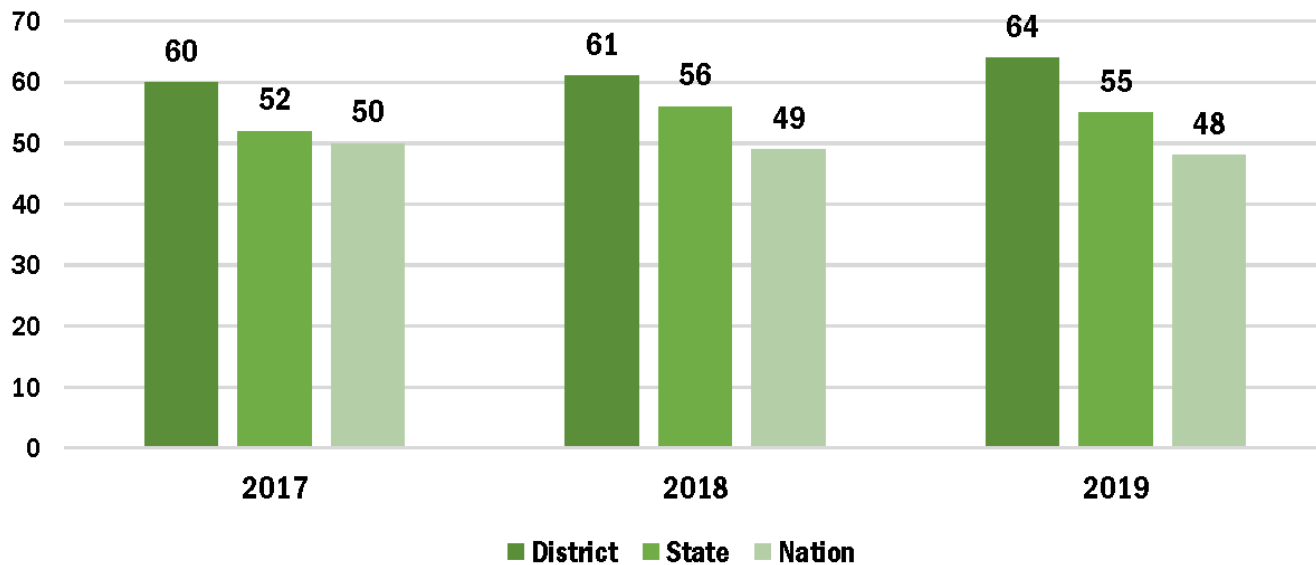


SAT test score results on the rise

SAT Evidence Based Reading and Writing Results



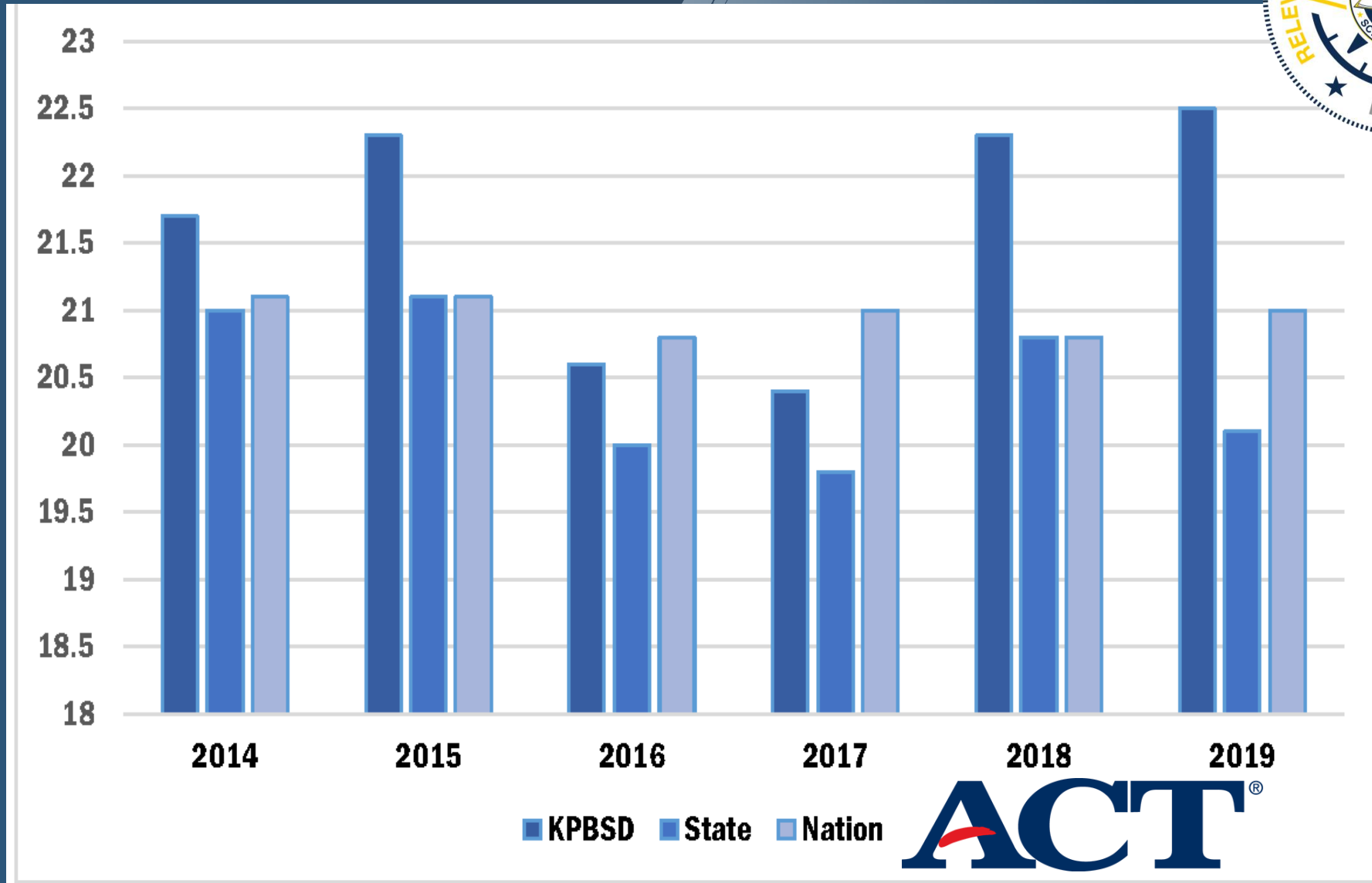
SAT Math Results



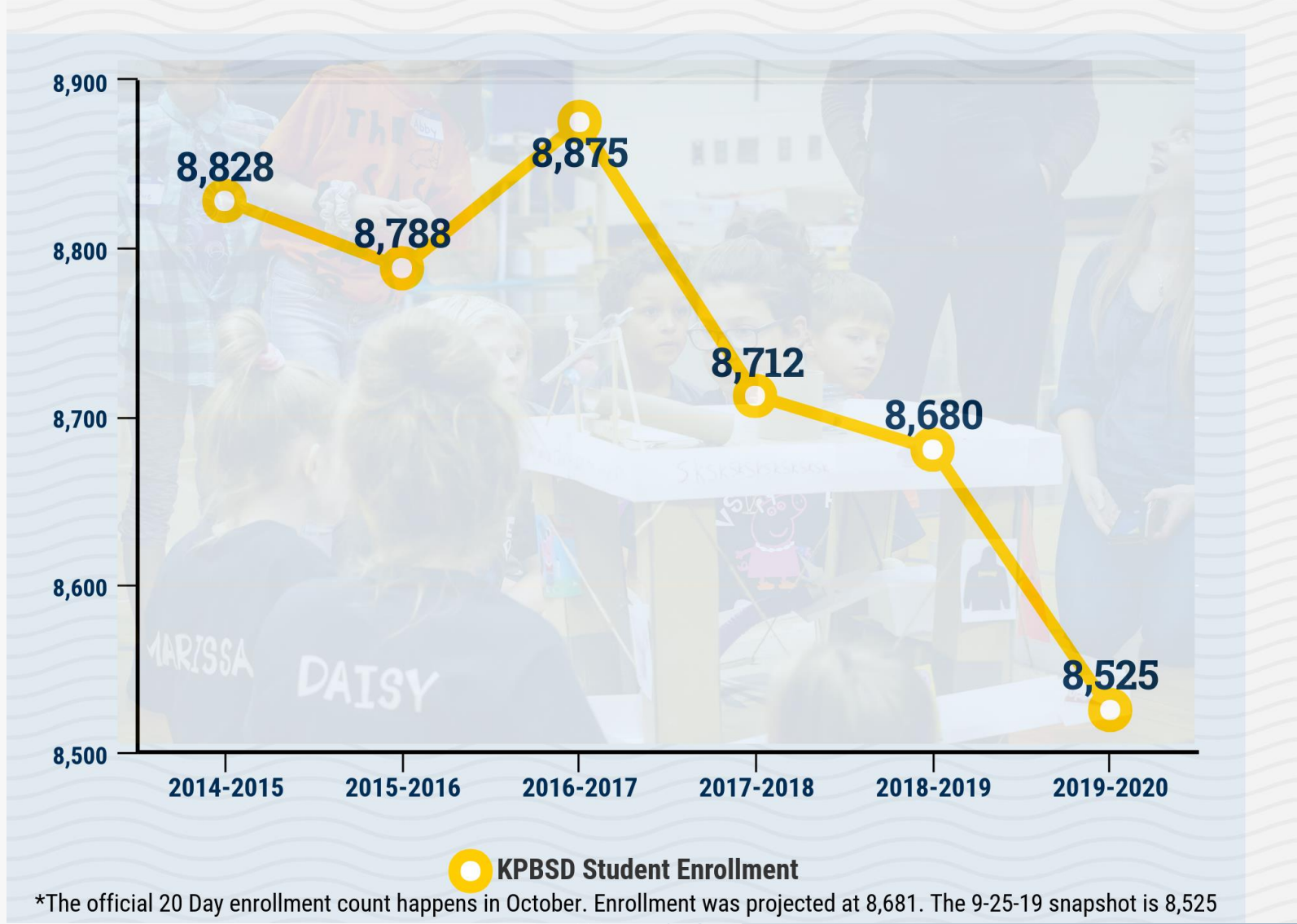
2017 – 2019
KPBSD, State of
Alaska, and
national results



KPBSD ACT test composite score



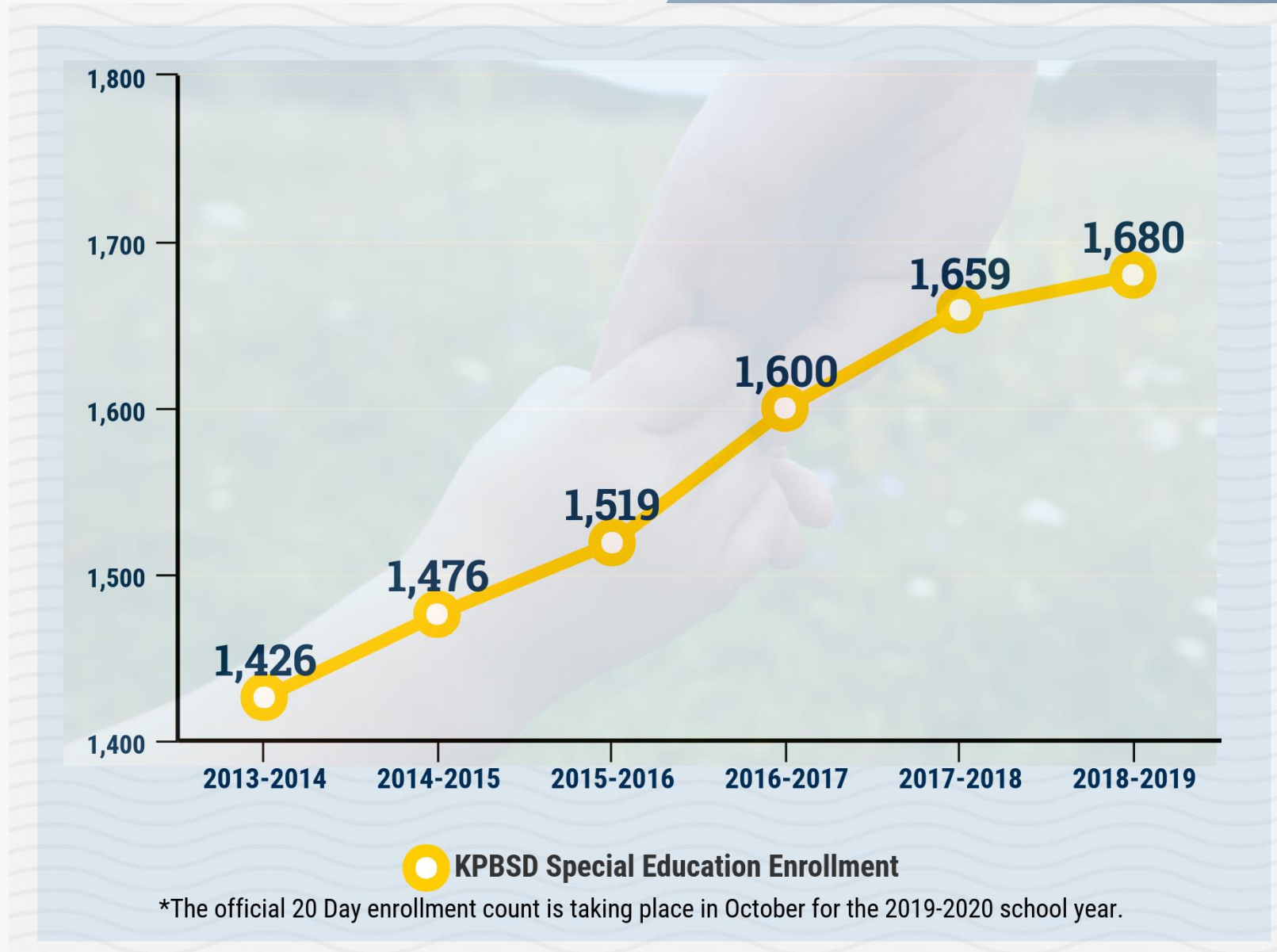
Overall student enrollment declines



**Kenai Peninsula
Borough
School District
2014-2015
to
*9-25-19
one-day count**



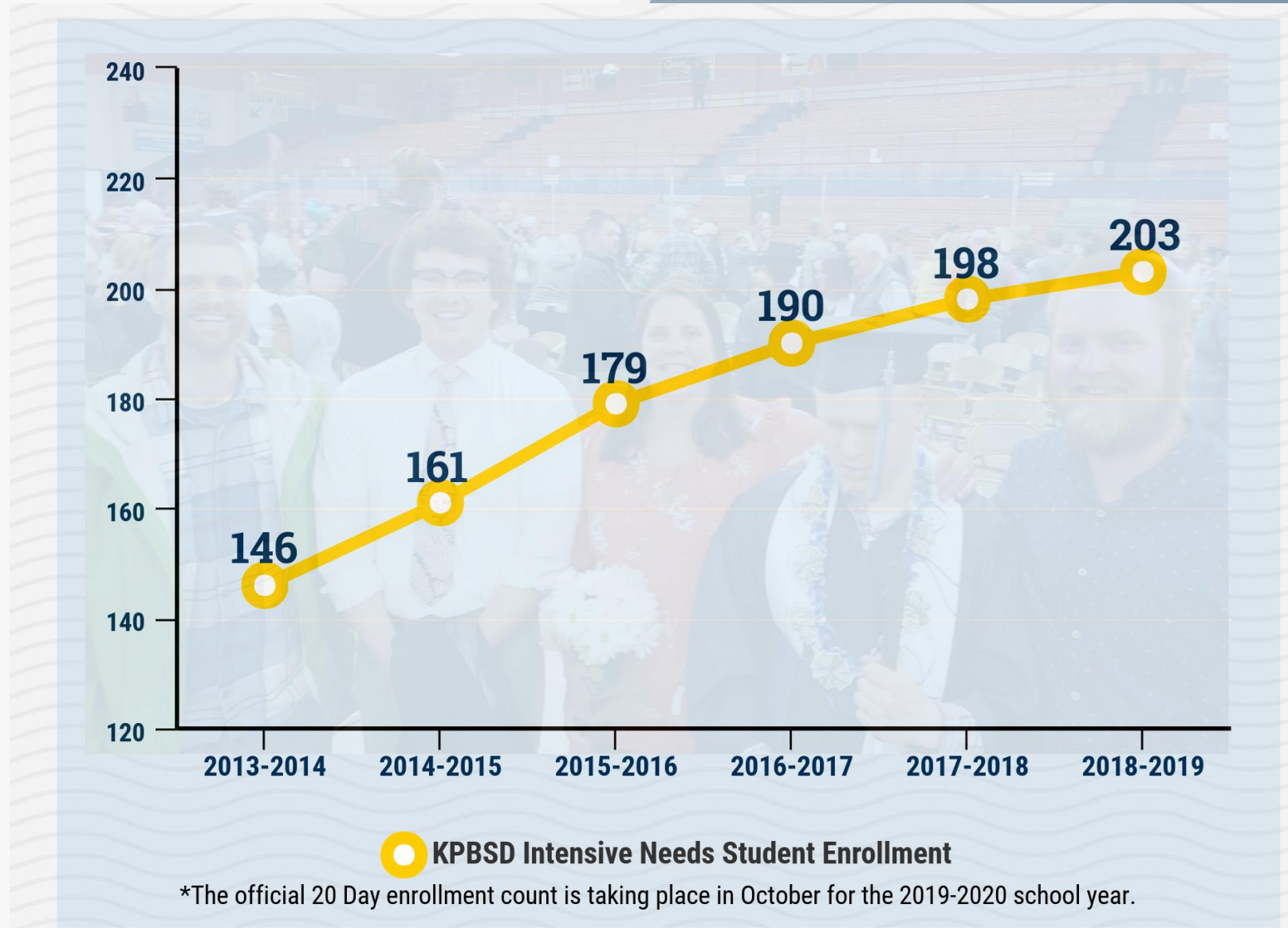
Students in special education rises



**Kenai Peninsula
Borough
School District
2013-2014
to
2018-2019**



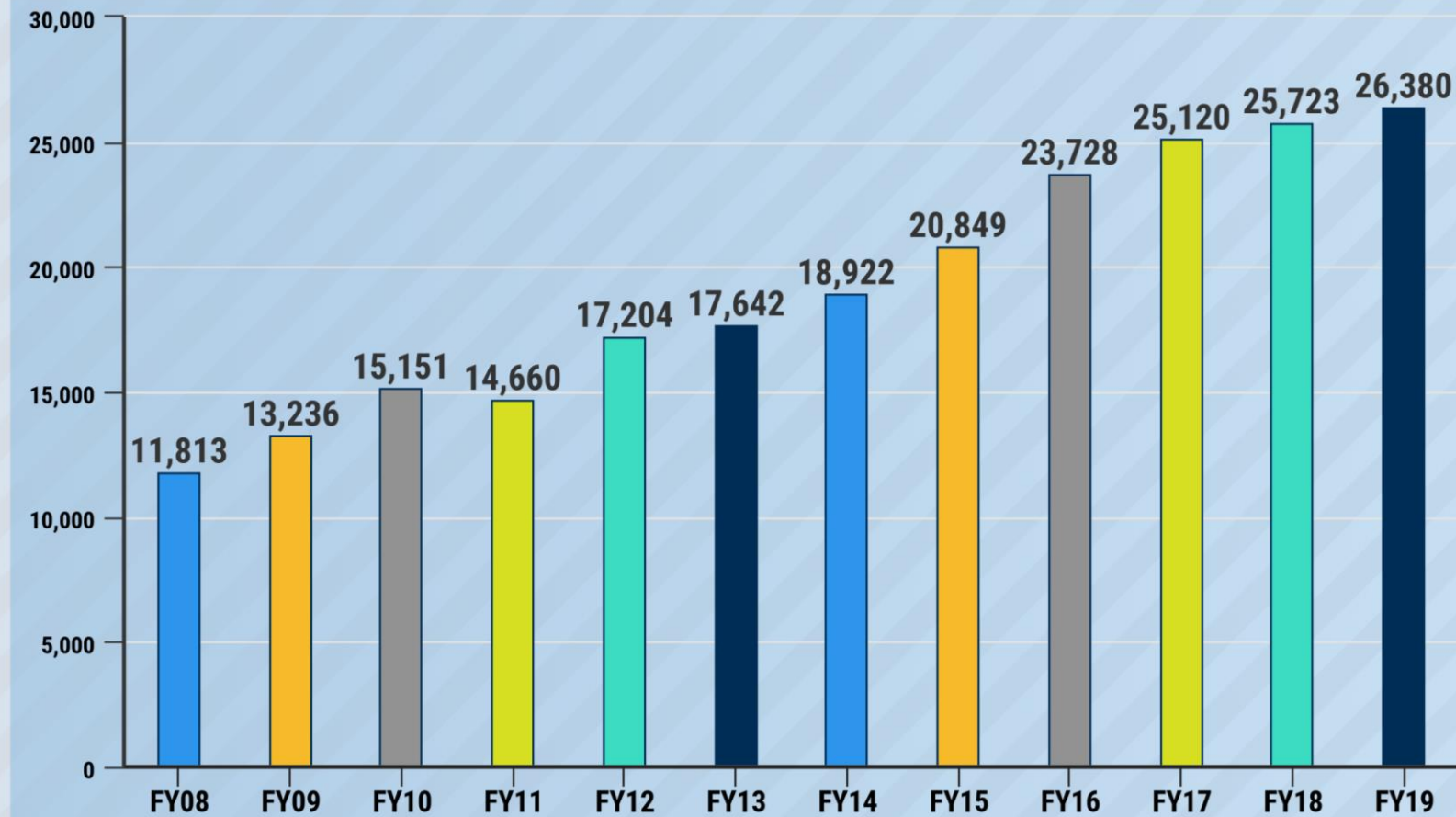
Enrollment: Intensive Needs (IN) students



**Kenai Peninsula
Borough
School District
2013-2014
to
2018-2019**



HEALTHCARE average cost per KPBSD employee



● Average Healthcare Cost per Employee

Positive School Climate & Culture

Student Engagement in their
own learning

Restorative vs. Punitive
Discipline Practices

Hanover Survey Benchmarking
and Goal Setting



Social Emotional Learning (SEL) is...

The process through which **children and adults** acquire and effectively apply the knowledge, attitudes, and skills necessary to understand and **manage emotions**, set and achieve positive goals, feel and show **empathy** for others, establish and maintain **positive relationships**, and make **responsible decisions**.



“Healthy students and **positive school culture are paramount to **student achievement**.**

We will strive to meet the needs of our students in this crucial area.”

–Superintendent O’Brien



ACES DEFINED

An adverse childhood experience (ACE) describes a **traumatic experience** in a person's life occurring **before the age of 18** that the person **remembers as an adult.**



CATEGORIES OF ACES

ABUSE	NEGLECT	HOUSEHOLD DYSFUNCTION
<ul style="list-style-type: none">• Emotional• Sexual• Physical	<ul style="list-style-type: none">• Physical• Emotional	<p>Living with someone:</p> <ul style="list-style-type: none">• with mental illness• who abuses substances• who was incarcerated <p>Witnessing domestic violence</p> <p>Experiencing a separation or divorce</p>



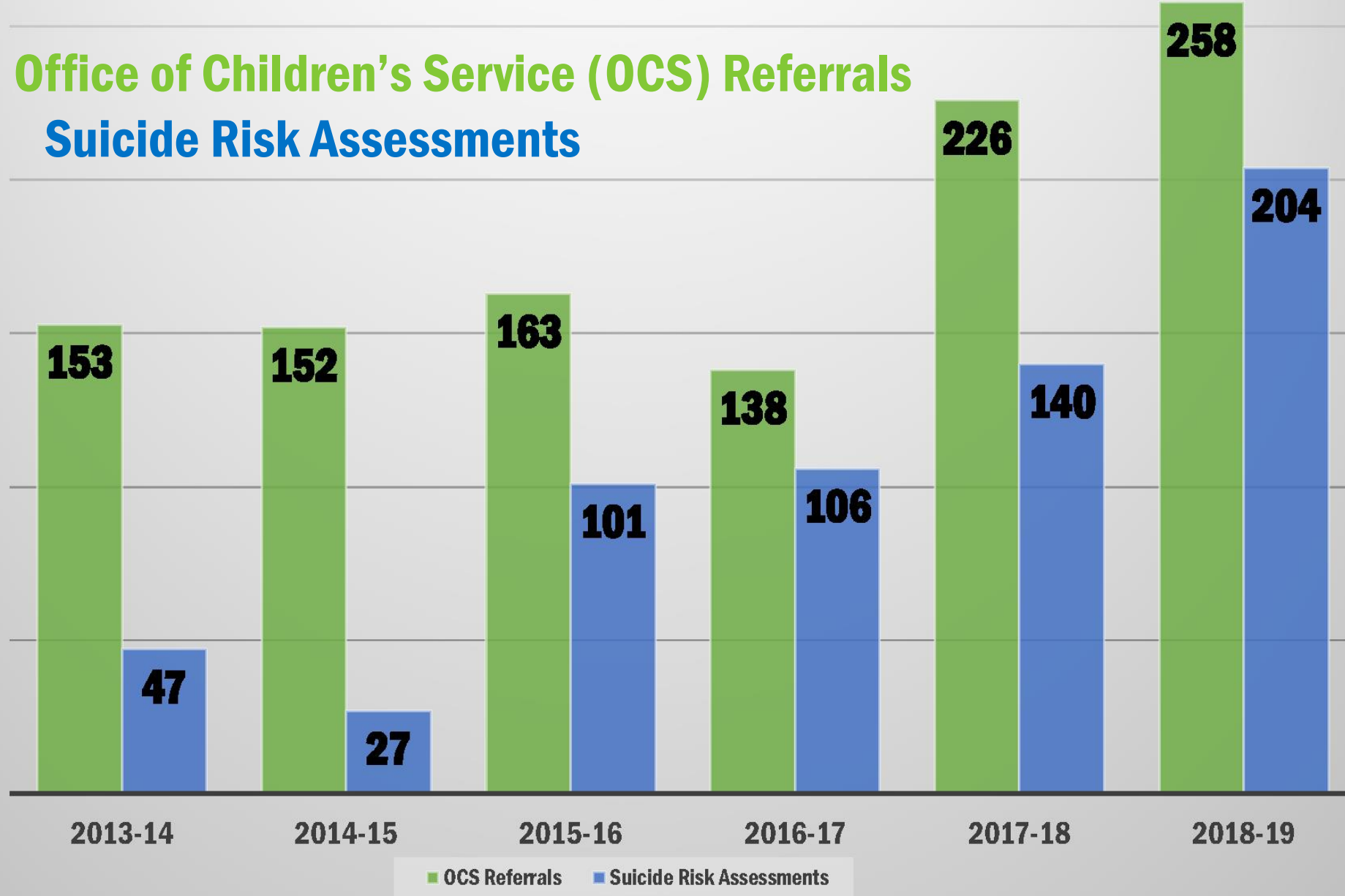
TRAUMA CAN IMPAIR LEARNING

- ✓ Affect attention, memory and cognition
- ✓ Reduce ability to focus, organize and process information
- ✓ Interfere with problem-solving and planning
- ✓ Result in frustration and anxiety



KPBSD Assessment & Referral Comparisons 2013-2019

Office of Children's Service (OCS) Referrals Suicide Risk Assessments



- **KPBSD Core Curriculum Professional Development**
- **Youth Mental Health First Aid**
- **Restorative Practices**
- **Sources of Strength**
- **The Great Body Shop**
- **Fourth R and Fourth R Plus**
- **Trauma Informed Educators - Dr. Linda Chamberlain**
- **Mandt Training**
- **Fetal Alcohol Syndrome Disorder (FASD)**
- **Life Space Crisis Intervention Training**



KPBSD STAFF TRAINING AND PROFESSIONAL DEVELOPMENT



- Positive Behavioral Intervention Supports (PBIS)
- Interventionists
- Special Education Behavioral Programs
 - Stages, Foundations, and Frameworks
- Social Skills Training for Targeted Student Needs

TIERED LEVEL OF SUPPORTS



DISTRICT PROVIDED SUPPORTS

NURSES
PSYCHOLOGISTS
COUNSELORS
HOMELESS LIAISONS



Additional Mental Health Services Are Needed

**Social
Workers**



AND



Counselors



\$1,580,000



**Total Grants
Supporting SEL
Received
2016 - Present**



BEHAVIORAL HEALTH AGENCY PARTNERS



- **Central Peninsula Hospital**
- **Peninsula Community Health Services**
- **Seaview Community Services**
- **Kenaitze Indian Tribe (Na'ini Family and Social Services)**
- **Ninilchik Tribal Council Health Services/Community Outreach**
- **Chugachmiut Behavioral Health**
- **South Peninsula Behavioral Health Services (The Center)**
- **Seldovia Village Tribal Clinic**
- **University of Alaska, Anchorage Center for Human Development**



Expressing Our Gratitude

Through partnerships and cooperation, we reach goals, and achieve success.

#ThankYou



OEM

Swan Lake Fire operations: activity travel, Cooper Landing and Sterling schools, air quality...



Borough Maintenance

Soldotna Prep and Soldotna High portables move, and opening schools in August



Joint Worksessions

The Borough Assembly and Board of Education will meet regularly about education & school funding on the peninsula



Alaska Municipal League

Increased focus and attention: cooperation between school district and borough administration to reach goals



Tableau

Tableau helps people see & understand their data: the KPB is joining KPBSD in a training



KPBSD is
#thankful
for you!

Questions?

**The mission of the Kenai Peninsula
Borough School District is to
empower all learners to positively
shape their futures.**

