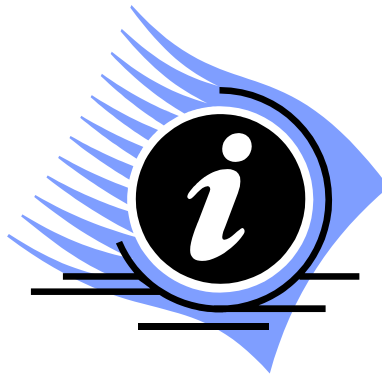


General Information Items for the Board of Education



Data Team Summit
Las Vegas, NV
November 9-10, 2011



Sarge Truesdell
Principal
Soldotna Middle School

I appreciate the opportunity to attend the Data Teams Summit in Las Vegas, NV. I always attend educational conferences with the goal of finding at least one thing that will have a direct impact on the students of the Kenai Peninsula Borough School District. I attended 4 different breakout sessions at the conference and listened to two key note speakers. I feel like the information I received will have a positive impact on student achievement at Soldotna Middle School.

The conference opened with a keynote address from Tony Flach. Tony's address was focused on data teams and the model that leadership and Learning Center has been teaching throughout the country. Tony spent the majority of his address producing data that showed the power of the data teams process. The first harsh realization that I had was that we (Soldotna Middle School) are well behind where we should be in terms of collaboration. The high functioning data teams that Tony was referring to during his opening were using formative student data on a weekly basis and that data was driving instruction.

As I mentioned in my opening paragraph, I attended 4 breakout sessions. The sessions I attended were the following: High leverage Instruction in Data Teams, Meeting the needs of all Learners in the data teams process, Leaders make it happen: Data teams Implementation, and finally, Formative Assessment Data teams. I was very excited to attend the "meeting the needs of all learners" session, as I assumed that the majority of the session would be about differentiating instruction for students with disabilities. I was disappointed to find out that the majority of the session was focused on ELL learners. The information was valuable, and I found some strategies that I believe can be used here at SMS with our small ELL population. However, it did not meet my expectations in regards to our SWD population. The breakout session that had the biggest impact on me was High Leverage Instruction in Data Teams. This session taught by Laura Besser really opened my eyes to how powerful some schools/districts are using data teams. Laura explained how the use of formative assessment data once broken down by teachers can be used to directly drive the instructional practices in the class. She showed us how data teams come together, discuss the data, and then create a plan to improve. The plan always revolves around instructional practices. A few weeks later the team will give another formative assessment to all of their students and then discuss the impact of the instructional practices that they used. As I visited with my table mates (most from Henderson, NV), they explained to me that their district had a late start every Wednesday that allowed teams the time to have these 1 hour highly structured meetings.

The real highlight of the conference for me was getting to listen to Douglas Reeves speak. I am currently in the middle of a book talk with the SMS math department using Reeves Elements of Grading

book. Listening to him speak and explain the data teams process was a real highlight in my educational career. He also presented data as he spoke. Since my return I have found that I am quoting his sources quite often.

In conclusion, I would again like to thank the district for its commitment to the professional development of its administration. Career Development opportunities like the Data Teams Summit really do have an impact on our students. My next steps in regards to implementing the information that I gained is to continue to move forward with our collaborative norms and start to spend SMS in-service time moving toward a data driven collaborative model. I do not believe we can function at the level that the teams I worked with in Nevada do unless time is allotted by the district. As Reeves quoted to start his key note address, he said, "The number 1 concern of teachers across the country is not money, but it is TIME to do the things that are required by the state and districts that they work for."

KENAI PENINSULA BOROUGH SCHOOL DISTRICT

148 North Binkley Street Soldotna, Alaska 99669-7553
Phone (907) 714-8888 Fax (907) 262-9132
www.kpbsd.k12.ak.us

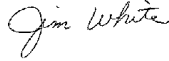
SCHOOL BOARD COMMUNICATION

Title: Public disclosure of donation by E-Rate subsidized service provider

Date: October 25, 2011

Item Number:

Administrator: Director, Information Services



Attachments:

☐ Action Needed ☐ For Discussion ☒ Information ☐ Other: _____

BACKGROUND INFORMATION

The Federal Communications Commission's (FCC's) 6th Report and Order set forth new E-Rate gift rules designed to help ensure fair and open competition for the provision of E-Rate subsidized services. Basically, the rules prohibit E-Rate service providers (telephone companies) from providing gifts to applicant (KPBSD) employees participating in E-rate-related technology planning and procurement.

Both the FCC, and the Schools and Libraries Division (SLD) of the Universal Service Administrative Company (USAC) that oversees the E-rate program, continue to stress that the gift rules "are not intended to discourage charitable donations" as long as they are not directly or indirectly linked to applicant procurement activities or are "not given with the intention of circumventing competitive bidding or other FCC rules." The lack of "safe harbor" guidelines for permissible donations, and the fear of retroactive findings of illicit intent, is casting a pall over many corporate donations. Given the uncertainty presently surrounding donations it has been recommended to disclose the donations to our governing body with accompanying acknowledgment that no benefit or competitive advantage is gained by the donor.

Periodically, Alaska Communications (ACS) donates services to the educational program of the Kenai Peninsula Borough School District. As an example, ACS provided DSL services at no charge for the October 25, 2011 College Fair at the Kenai Mall. ACS also has temporarily provided a cellular router to attempt to broadcast video for a Classrooms Without Walls project over the ACS cellular network.

KPBSD gratefully accepts these donations as what they are: donations. These donated services are strictly voluntary and are not a requirement in any way of our present business relationship. Nor is there any explicit or implicit advantage to be gained by the donor as to future business. Such donations have no effect on district E-rate operations or procurement decisions.

ADMINISTRATIVE RECOMMENDATION

N/A



KENAI PENINSULA BOROUGH

144 North Binkley Street • Soldotna, Alaska 99669-7520

PHONE: (907) 714-2160 • **FAX:** (907) 714-2388

Toll-free within the Borough: 1-800-478-4441, Ext 2160

BOROUGH ASSEMBLY

December 14, 2011

Dr. Steve Atwater, Superintendent
Kenai Peninsula Borough School District
148 N. Binkley Street
Soldotna, Alaska 99669

Dear Superintendent Atwater

Thank you for your letter dated December 7, 2011, requesting a joint work session on January 17, 2012, between the Assembly and the School Board.

Unfortunately, it appears as though three (3) assembly members, including myself, will be absent from the January 17, 2012 Assembly meeting. Therefore, it would not be the opportune time to meet.

Also, it seems appropriate to give the new borough administration an opportunity to work with the borough maintenance department and the school district prior to addressing any concerns at a joint work session.

I would like to propose instead that we give Mayor Navarre time to review the process used by borough maintenance to designate priority status to its maintenance projects as well as the concept of setting aside funds as a match for partially funded school maintenance projects. After which time, he may suggest a joint work session to discuss the process with the assembly and school board, if there are still concerns.

Sincerely,

Gary Knopp
Assembly President

GK/jb

cc: Mayor Mike Navarre



Contact: Pegge Erkeneff
Communications Specialist
Phone: (907) 714-8888
Fax: (907) 262-5867
Pegge@kpbsd.org

148 N. Binkley
Soldotna, AK 99669
[Communications blog](http://www.kpbsd.k12.ak.us)
www.kpbsd.k12.ak.us

KENAI PENINSULA BOROUGH SCHOOL DISTRICT

PRESS RELEASE

KPBSD proposed bus transportation route changes in Southern Peninsula area

Soldotna, December 16, 2011—KPBSD faces a \$750,000.00 deficit caused by inflation in transportation costs.

In order to educate the public and seek positive solutions to a transportation deficit, two informational meetings were held on December 1 and 2, 2011, in the Southern Peninsula area. During the meetings, the proposed transportation route changes and school start times were presented, together with information about the current transportation deficit. Any changes will not take place until August 2012.

KPBSD is exploring options to address this transportation deficit, and is open to solutions. The transportation costs as bid by First Student have increased significantly beyond the amount we are reimbursed by the State of Alaska, resulting in a deficit of approximately \$750,000.

No final decisions about changes for 2012 have been made at this time. The meeting handouts and the PowerPoint presentation are available on the KPBSD website via a link on the home page in the [Community Interest](#) section, or directly at this link: <http://bit.ly/TransportationRoutes>

KPBSD encourages families and the public to review the documents, PowerPoint, and maps that are on the website, then offer ideas and solutions via an [online comment form](#), no later than January 21, 2012.

Contact Mr. Dave Jones, Assistant Superintendent, with your questions. Mr. Jones can be e-mailed at DaveJones@kpbsd.k12.ak.us, or called at 907-714-8838.

Links:

[KPBSD Bus Transportation Routes](#)
[Online comment form](#)
www.KPBSD.k12.ak.us

###



Alaska Construction Academies Quarterly Progress Report FY 2012

Kenai Peninsula Borough School District

2nd Quarter Report for 2011-2012

During the 2011-2012 school year the School District will be responsible for the outreach and basic skills training for our students with an emphasis in basic carpentry skills, residential wiring, framing, plumbing, weatherization, gas metal and shielded metal arc welding, employability skills, basic computer aided drafting and blue print reading. National Center for Construction Education and Research (NCCER) will be taught in all of our construction/welding academies.

The first quarter of school we ordered and received the Contren Connect Core Curriculum. We have heard a lot of good feedback from our instructors that are using the Contren Connect program. We have had at least 40 students that have already completed the first module and a few students that have completed the construction math module and the intro to hand tools.

We have been advertising our upcoming academies via newspaper, emails, school newsletters, face book and flyers throughout the schools. We are going to experiment with sending out postcards over Christmas Break to see if we can recruit more students that way.

Our instructor Paul Johnson from Nikiski has been dedicated to a huge project over these last two years. He and students have been remodeling an old building into a well structured Triumvirate Theatre. Each time we go and visit the site all of the students are working very diligently with all of their safety gear on. They are learning how to frame, sheetrock, mud and tape, sauder and much more. The students are very proud of their work. This has been an ongoing project that will be a wonderful resource for the community.

Barry Hartman will be instructing an after school academy beginning in January at Skyview High School. Barry and his students will be constructing another gazebo. This is a great project for students as they get to work with many different tools such as the miter saw, table saw, band saw (for the fancy scrolling), drill press, circular saw portable drill, impact driver and more.

Steve Schoessler held a welding academy this last quarter at the Workforce Development Center in Kenai. Steve had a mixture of experienced students in his academy. The big project that the students had was constructing a Sled Deck for a pick-up truck. Some smaller projects were: a fire pit, trailer crosspiece repair and receiver hitch caps. Steve mentioned they focused mainly on welding skill development in their projects.

Last quarter I was contacted by the manager of the Ninilchik Fairgrounds about having local high school student's work and construct a project for improvements on the fairgrounds. The little town of Ninilchik has a population of 800. It is a small town but a strong close community that has a lot to offer. Ninilchik is known for holding the "Biggest Littlest Fair" in Alaska. We felt it would be a great project for the students to participate in. At this time they are thinking about building a gazebo for the front entrance of the fair grounds. There will be more information on this academy coming next quarter.

We are offering an Employability Skills Academy this next semester. Whenever we talk to industry people about the one thing that they would like to see us offer to our high school students is, "employability skills". We do have many students that do the online version but having an instructor doing the face to face interviews and communication skills is a key factor in improving employability skills. The instructor will be working with the students on writing resumes, mock interviews, conflict resolution, person to person etiquette, communicating, customer service, team work and also going to the job center for additional experience with employability skills.

Soldotna High School has a new instructor on board this year. Tyson Cox will be teaching an Introductory to Plumbing Academy. He will be teaching the students the basic care and use of tools, fittings and materials used in the plumbing and heating trade. They will also learn how to safely transfer fluids and gases, how to solder copper pipe along with much more.

We also have a new instructor in Homer this year, his name is Mickey Todd. He is new in the department of welding but has learned a substantial amount over this last semester. He will be teaching an after school welding academy this next semester. His students would like to construct various styles of ATV trailers.

The program this year seems to be running very smoothly. We have not run into any delays or obstacles so far.

The instructors evaluate the students with ongoing informal assessment by observing the safety of the students using machines/tools and also by noticing if the students apply what they've learned later in the semester on a different application without having to repeat instructions. The instructors also have formal written tests midterm and then a final test. The best way to evaluate the skill level is in the final product such as the greenhouses, trailers, smoke houses, etc. The final product says a lot about the training they have received. The NCCER is also taught in every class.



Skyview High School Cabin



Skyview High School Cabin Floor



Measuring and about to cut the sheetrock



Snowmachine hauler



Bumper



Future construction worker

KENAI PENINSULA BOROUGH SCHOOL DISTRICT

148 North Binkley Street Soldotna, Alaska 99669-7553

Phone (907) 714-8888 Fax (907) 262-9132

www.kpbsd.k12.ak.us

SCHOOL BOARD COMMUNICATION

Title: Student Immunization Report

Date: December 19, 2011

Item Number:

General
Information

Administrator: Steve Atwater, Ph.D.
Superintendent of Schools



Attachments:

☐ Action Needed ☐ For Discussion ☒ Information ☐ Other: _____

BACKGROUND INFORMATION

You may have seen recent reports in the national media on the declining trend in the number of school children who receive immunizations. In response to this I asked Naomi Walsworth, District Nurse Coordinator, to report KPBSD's immunization percentages. As you can see from the table below, our trend of students receiving immunization does not mirror what is going on at the national level. Note that this percentage does not include our Connections students who do not participate in co-curricular activities or classes in the public school setting.

Year	Percent of KPBSD Students receiving immunizations
2009-10	87
2010-11	88
2011-12	90

ADMINISTRATIVE RECOMMENDATION

N/A

KENAI PENINSULA BOROUGH SCHOOL DISTRICT

148 North Binkley Street Soldotna, Alaska 99669-7553

Phone (907) 714-8888 Fax (907) 262-9132

www.kpbsd.k12.ak.us

SCHOOL BOARD COMMUNICATION

Title: Students with Disabilities Trend Information

Date: December 12, 2011

Item Number:

General
Information

Administrator: Steve Atwater, Ph.D.
Superintendent of Schools



Attachments: Disability Trend Graphs, SPED Acronyms

☐ Action Needed ☐ For Discussion ☒ Information ☐ Other: _____

BACKGROUND INFORMATION

The Individuals with Disabilities Education Act (IDEA) is a federal law designed to protect the rights of students with disabilities by ensuring that everyone receives a **free appropriate public education** (FAPE), regardless of ability. Furthermore, IDEA strives not only to grant equal access to students with disabilities, but also to provide additional special education services and procedural safeguards.

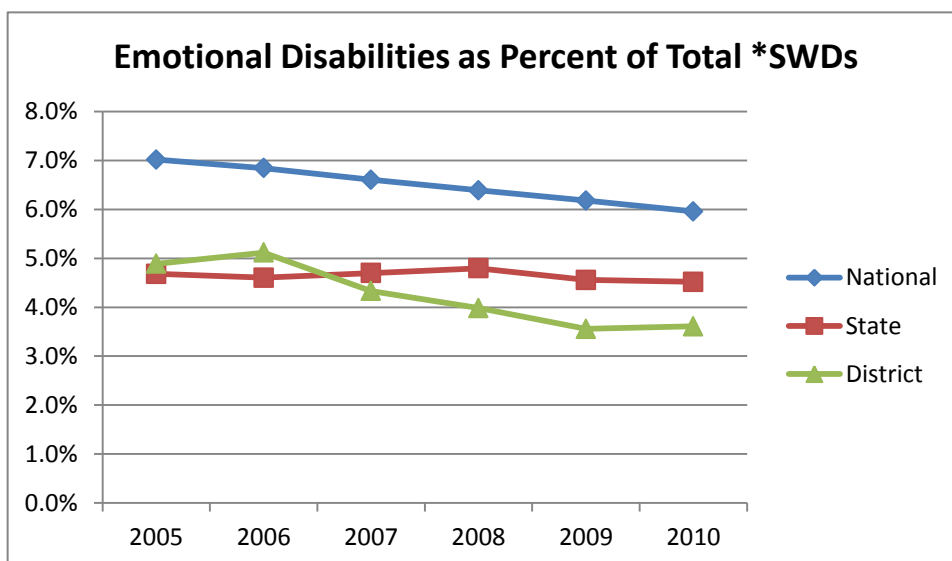
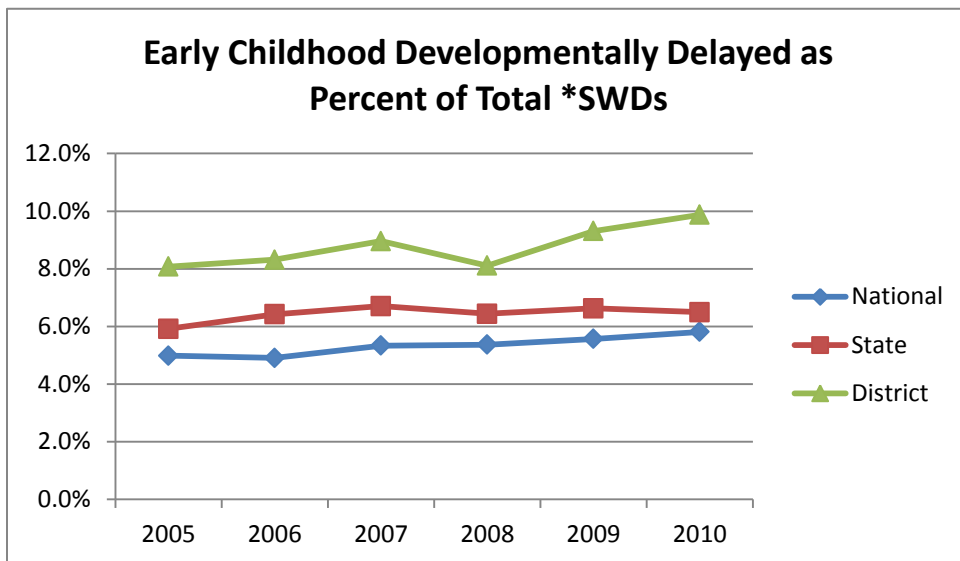
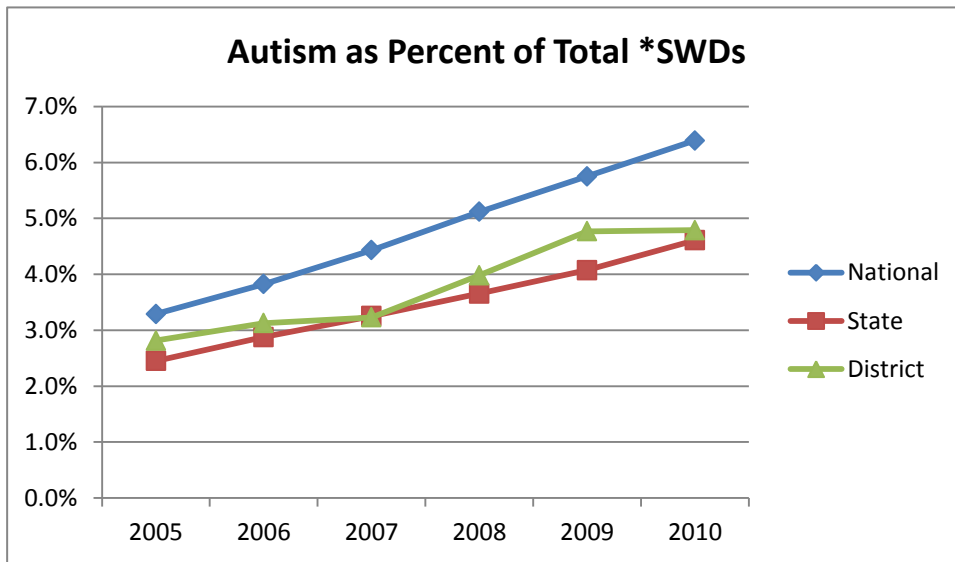
I am pleased to note that KPBSD is regularly recognized for providing excellent service to our students with disabilities. Also of note is that it appears that our Response to Intervention work has decreased the number of referrals for students identified with learning disabilities.

The attached graphs detailing the various trends of students with disabilities are informational and are provided so that you can gain perspective of our trends as compared to those at the state and national level.

ADMINISTRATIVE RECOMMENDATION

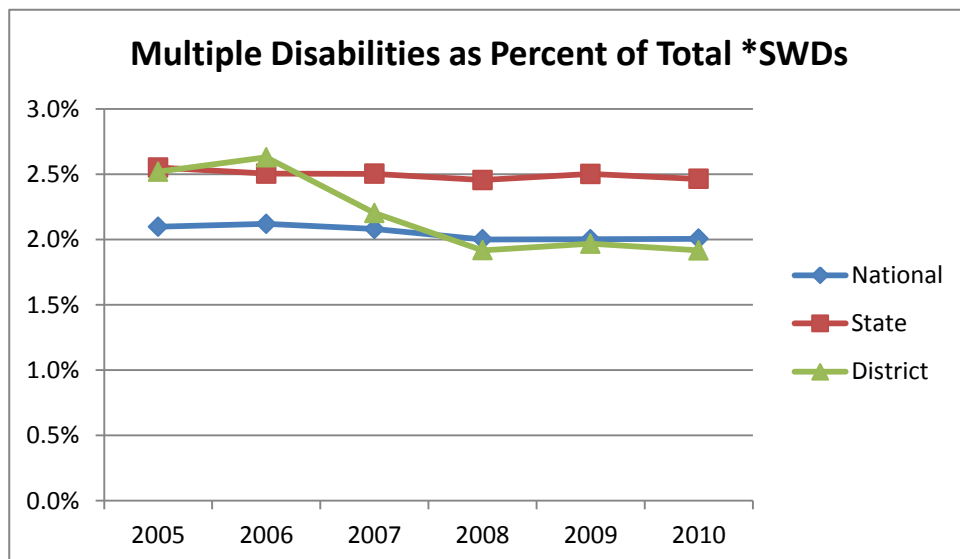
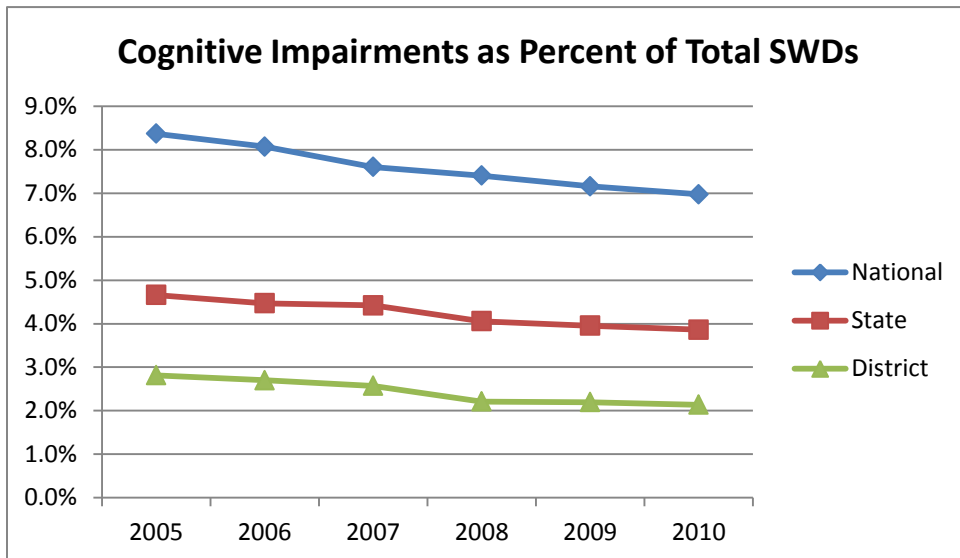
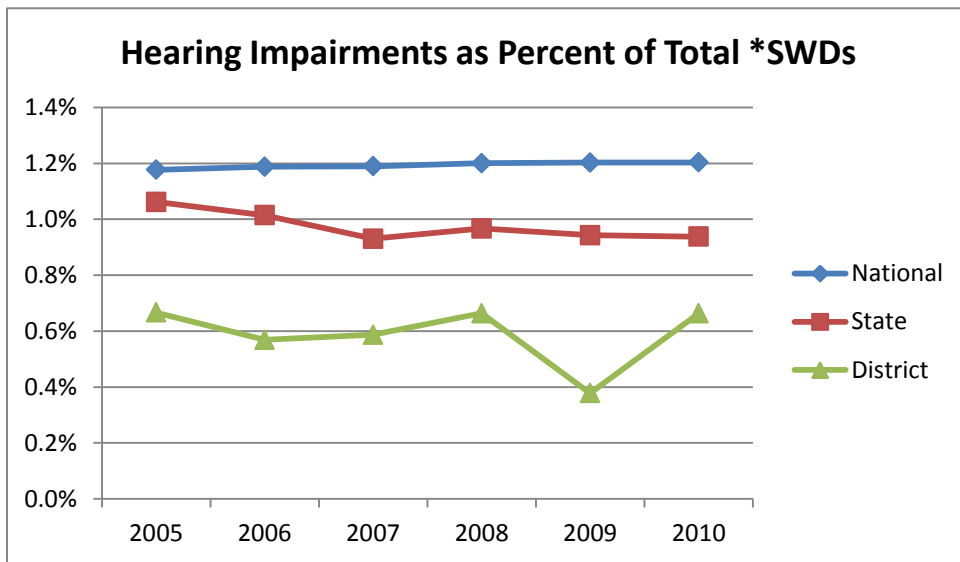
N/A

A comparison of KPBSD Students with Disabilities by Area of Disability with National and State Trends
December 2011



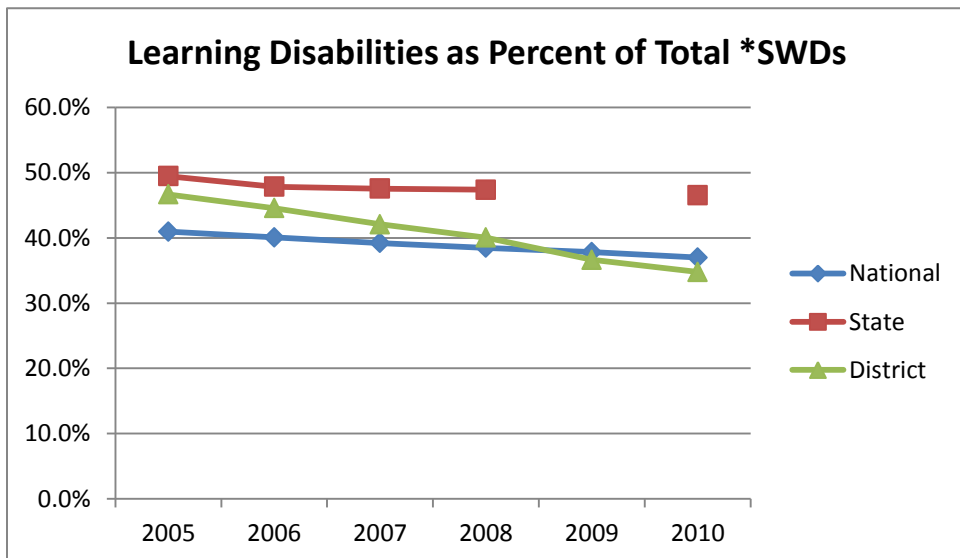
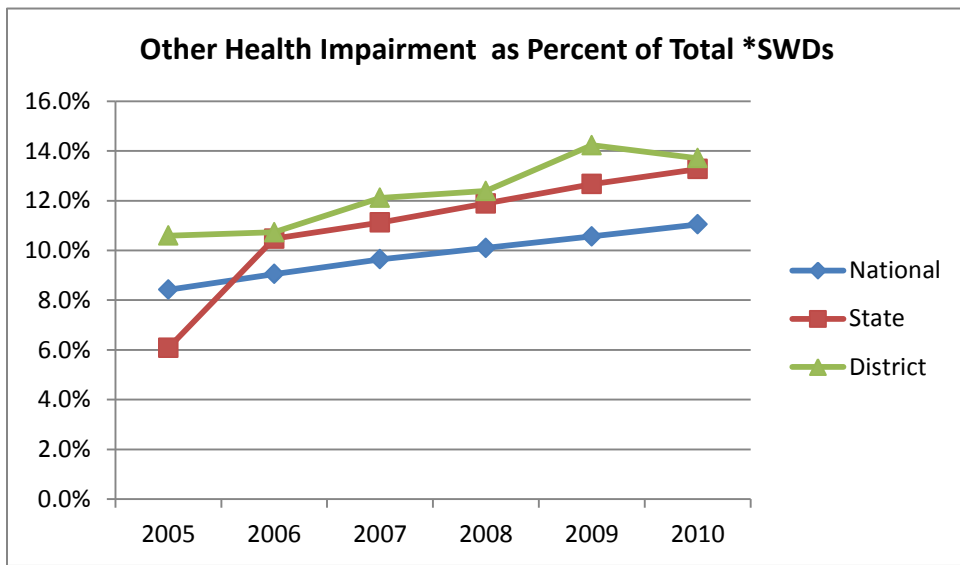
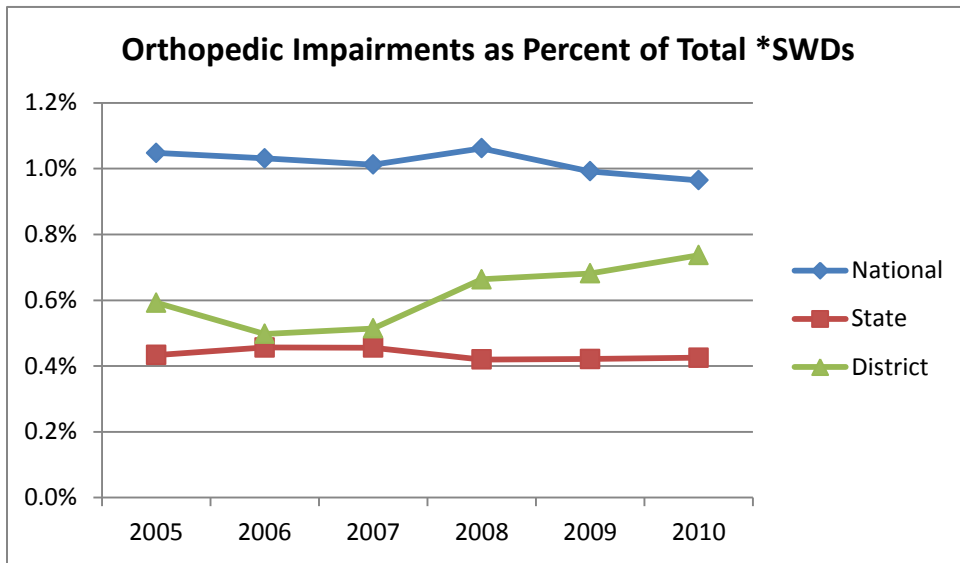
*Students With Disabilities

A comparison of KPBSD Students with Disabilities by Area of Disability with National and State Trends
December 2011



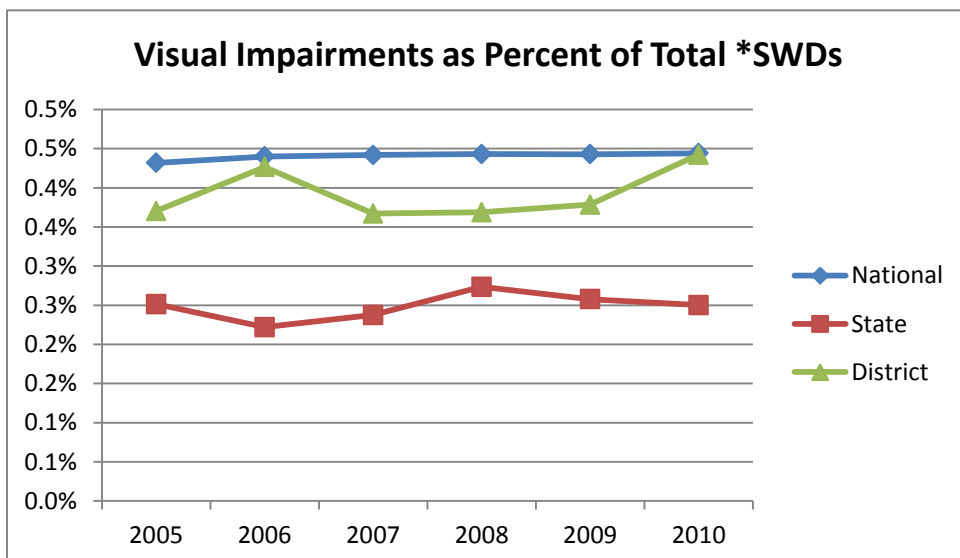
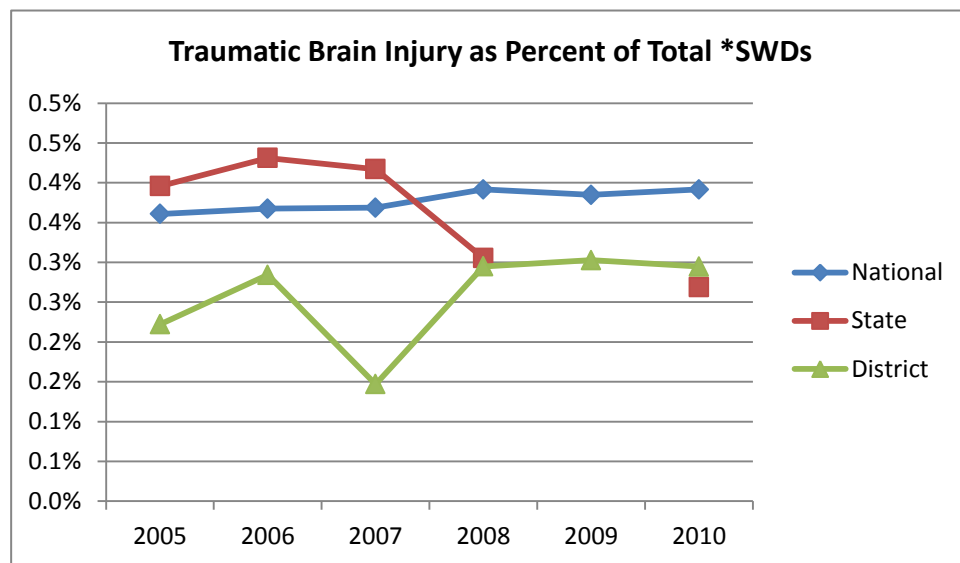
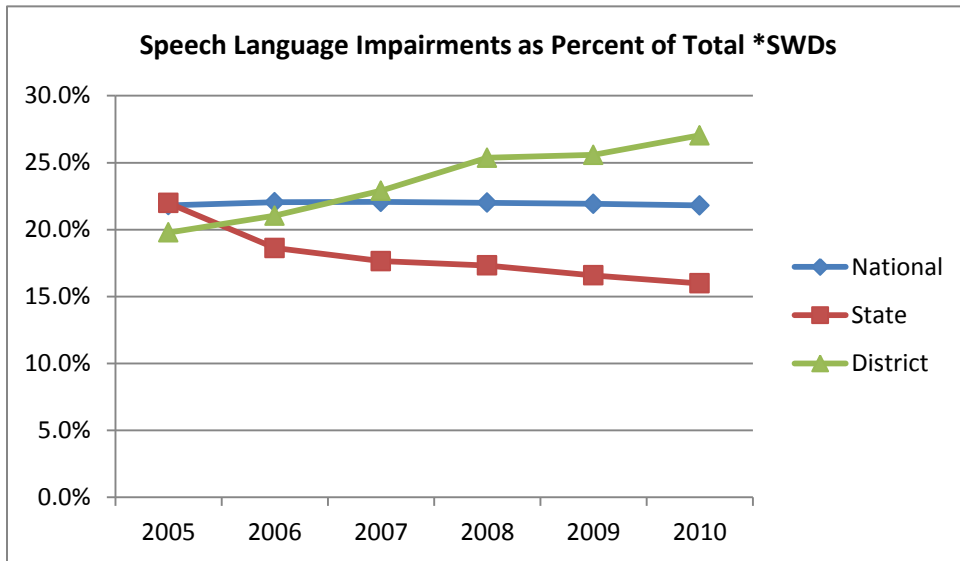
*Students With Disabilities

A comparison of KPBSD Students with Disabilities by Area of Disability with National and State Trends
December 2011



*Students With Disabilities

A comparison of KPBSD Students with Disabilities by Area of Disability with National and State Trends
December 2011



*Students With Disabilities

KENAI PENINSULA BOROUGH SCHOOL DISTRICT

148 North Binkley Street Soldotna, Alaska 99669-7553

Phone (907) 714-8888 Fax (907) 262-9132

www.kpbsd.k12.ak.us

SCHOOL BOARD COMMUNICATION

Title: Discipline Data

Date: December 27, 2011

Item Number:

Administrator: Sean Dusek *Sean Dusek*

Attachments: KPBSD Discipline Data 2005-2012 – 2nd Quarter

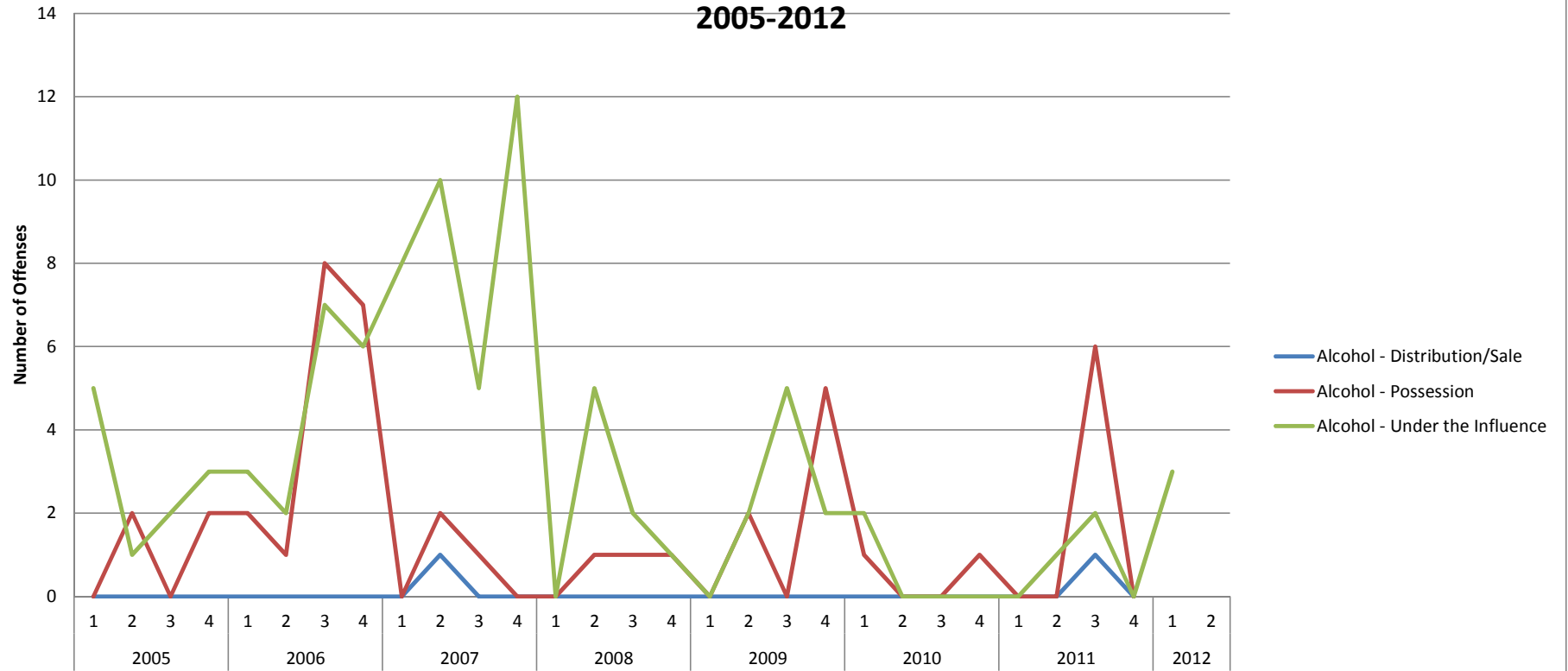
☐ Action Needed ☐ For Discussion ☒ Information ☐ Other: _____

BACKGROUND INFORMATION

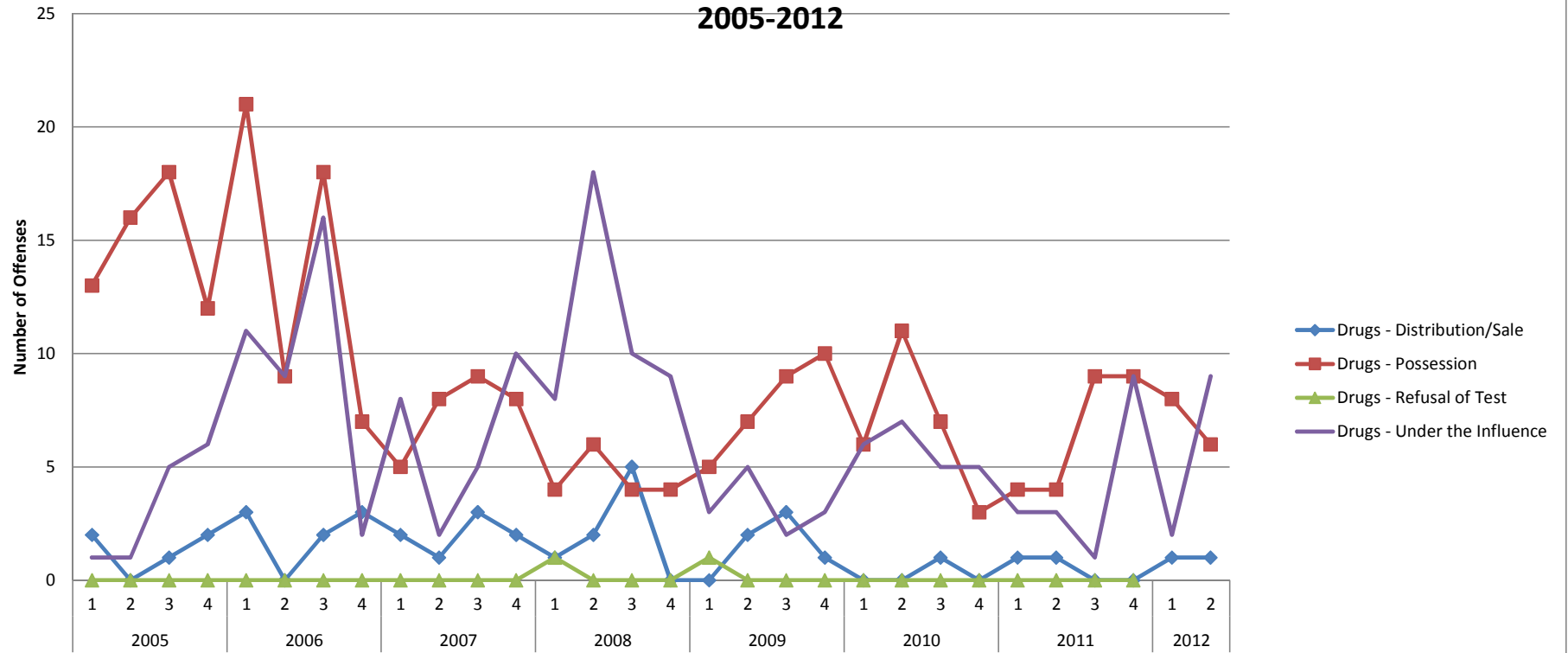
Attached is the updated discipline report for the years 2005-2012. This report contains the 2011-12 Second Quarter.

ADMINISTRATIVE RECOMMENDATION

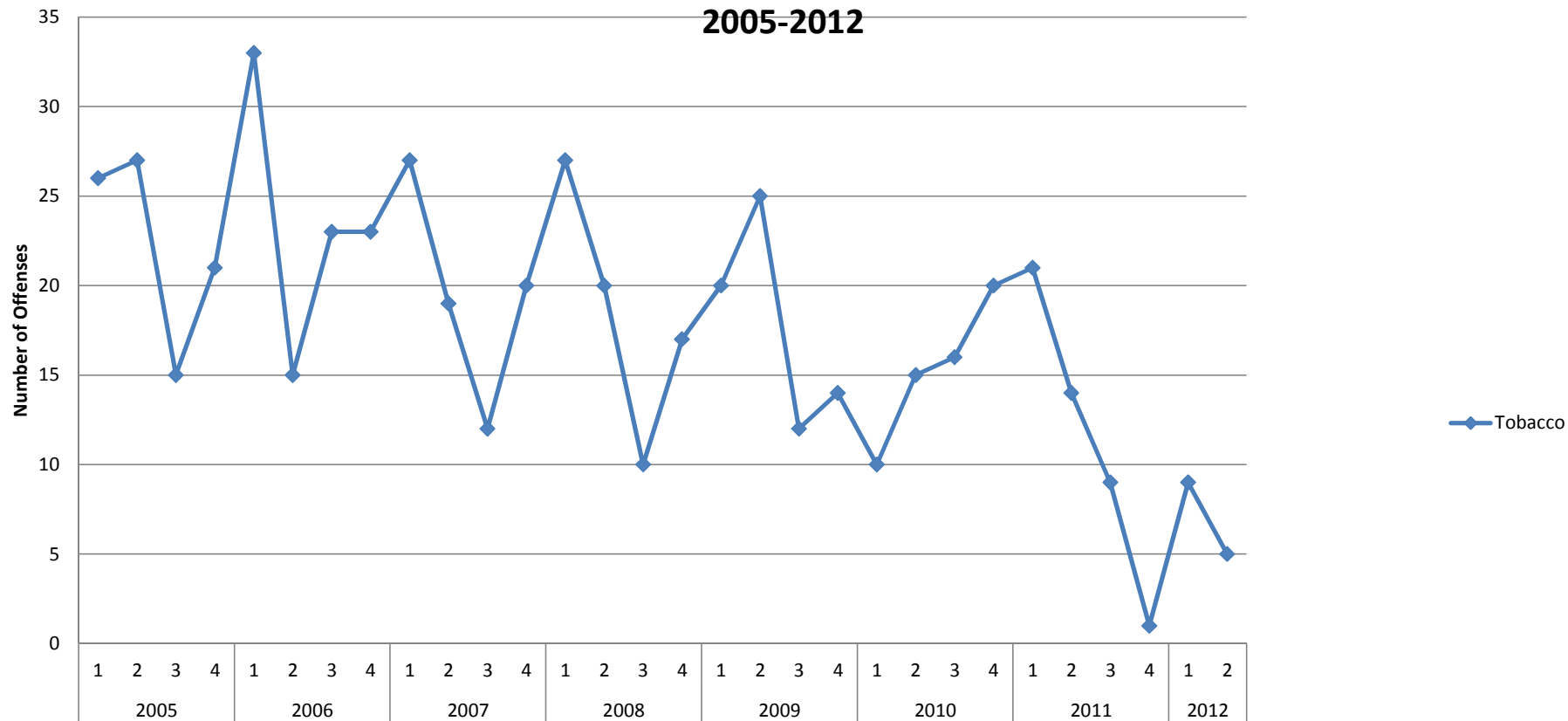
Alcohol Offenses 2005-2012



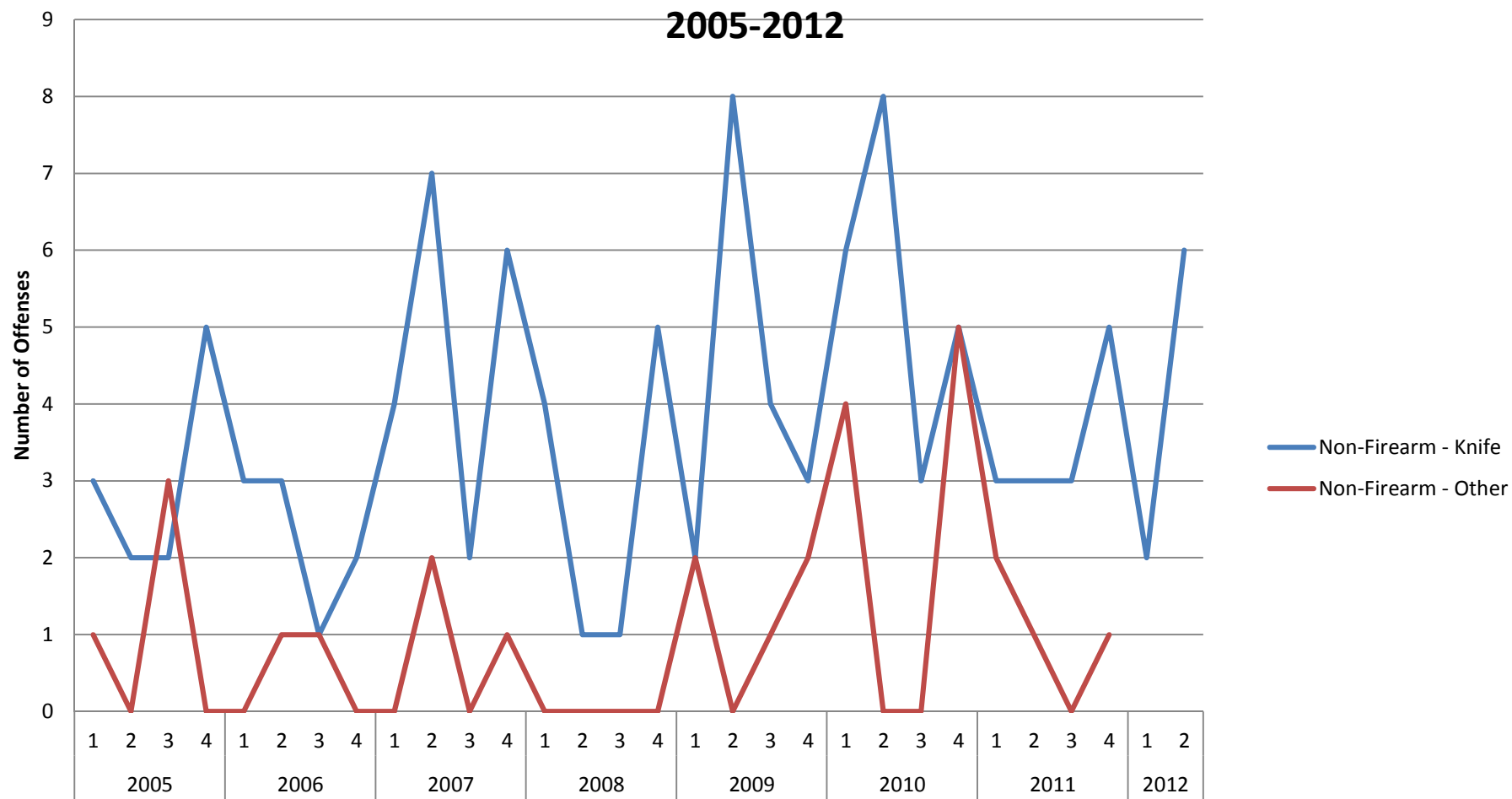
Drug Offenses 2005-2012



Tobacco 2005-2012



Weapons Offenses 2005-2012



KENAI PENINSULA BOROUGH SCHOOL DISTRICT

148 North Binkley Street Soldotna, Alaska 99669-7553

Phone (907) 714-8888 Fax (907) 262-9132

www.kpbsd.k12.ak.us

SCHOOL BOARD COMMUNICATION

Title: Update on Administrative Action to Meet FY12 Board Goals

Date: December 22, 2011

Item Number:

Administrator: Steve Atwater, Ph.D.
Superintendent of Schools



Attachments:

☐ Action Needed ☐ For Discussion ☒ Information ☐ Other: _____

BACKGROUND INFORMATION

Board Goal	Administrative Activity
By December 2011, the KPBSD School Board will review and then revise Board Policy 0210(a)	<ul style="list-style-type: none">• Revision of policy drafted September 2011• Policy out for public comment October-December• Comment reviewed, policy amended December 2011• Revised policy reviewed by board January 2012
The KPBSD School Board will work with the district administration to implement recommendations of the curriculum management audit	<ul style="list-style-type: none">• Continued implementation of curriculum management plan• District goal of effective instruction and collaboration• Leadership team reviewing recommendations and drafting policy
The KPBSD Board will continue to work with the KPB Assembly to develop a long-term funding process to guide the local contribution to the school district.	<ul style="list-style-type: none">• Request to assembly to establish process for calculating school funding – quarterly update September 2011• Request to assembly to set funding for district in February or March- quarterly update September 2011• Review of school funding by mill equivalent- quarterly update December 2011• Request assembly to set funding as soon as then can- quarterly update December 2011
The KPBSD Board will support and participate in the District Communication Strategic Plan	<ul style="list-style-type: none">• Committee set four key phrases• Implemented proactive media relations to ensure the district provides accurate and timely information to district constituents• Integrated social media and blogs to communicate and develop collaborative relationships

ADMINISTRATIVE RECOMMENDATION

N/A

KENAI SCHOOL DISTRICT

DEPARTMENT EXPENSE REPORT FOR BEGINNING BALANCE THRU DECEMBER, 2011

Page 1 of 12

01/03/2012

4:27:02 PM

Report Code: BAT_GL_DEPEXP - 92096

ACCOUNT NUMBER			ACCOUNT NAME		SHORT NAME				
TYPE	ACCTG. DATE	DOC. NO.	DESCRIPTION		CHECK NO.	PAYEE/PAYER NAME		DEBIT	CREDIT
ACCOUNT SUMMARY			ORIG. BUDGET	ADJ. BUDGET	ENCUMB	CURR. DR / CR	YTD DR / CR	CURR. BAL.	PCT
100-70-4511-0000-3240			100-70-SCH BOARD-GENL-SUPPT STAFF						
JE	07/29/2011	12500132	PAYROLL - 07/29/2011					3,061.95	0.00
JE	08/31/2011	12500882	PAYROLL - 08/31/2011					3,089.52	0.00
JE	09/30/2011	12501858	PAYROLL - 09/30/2011					3,383.76	0.00
JE	10/31/2011	12502912	PAYROLL - 10/31/2011					3,089.52	0.00
JE	11/30/2011	12503918	PAYROLL - 11/30/2011					3,236.64	0.00
JE	12/30/2011	12504575	PAYROLL - 12/30/2011					3,236.64	0.00
100-70-4511-0000-3240			38,251.00	38,251.00	20,743.92	19,098.03	19,098.03	-1,590.95	-4.16
100-70-4511-0000-3291			100-70-SCH BOARD-GENL-SUB/SUPPT						
								0.00	0.00
100-70-4511-0000-3291			320.00	320.00	0.00	0.00	0.00	320.00	100.00
100-70-4511-0000-3294			100-70-SCH BOARD-GENL-TEMP SPPT						
JE	11/30/2011	12503918	PAYROLL - 11/30/2011					210.13	0.00
100-70-4511-0000-3294			0.00	0.00	0.00	210.13	210.13	-210.13	0.00
100-70-4511-0000-3295			100-70-SCH BOARD-GENL-OT SUPPT						
JE	11/30/2011	12503918	PAYROLL - 11/30/2011					301.67	0.00
BA	12/09/2011	455	12/5/11 Revision					-150.00	0.00
100-70-4511-0000-3295			150.00	0.00	0.00	301.67	301.67	-301.67	0.00
100-70-4511-0000-3300			100-70-SCH BOARD-GENL-LEAVE/SUPPT						
								0.00	0.00
100-70-4511-0000-3300			566.00	566.00	0.00	0.00	0.00	566.00	100.00
100-70-4511-0000-3511			100-70-SCH BOARD-GENL-HEALTH CARE						
JE	07/29/2011	12500133	BENEFITS - 07/29/2011					6,132.56	0.00
JE	08/31/2011	12500883	BENEFITS - 08/31/2011					3,902.50	0.00
JE	09/30/2011	12501859	BENEFITS - 09/30/2011					5,017.50	0.00
JE	10/31/2011	12502913	BENEFITS - 10/31/2011					5,017.50	0.00
JE	11/30/2011	12503919	BENEFITS - 11/30/2011					5,017.50	0.00
BA	12/09/2011	457	12/5/11 Revision					-13,116.00	0.00
JE	12/30/2011	12504576	BENEFITS - 12/30/2011					5,017.50	0.00
100-70-4511-0000-3511			73,326.00	60,210.00	30,105.00	30,105.06	30,105.06	-0.06	0.00

KENAI SCHOOL DISTRICT

DEPARTMENT EXPENSE REPORT FOR BEGINNING BALANCE THRU DECEMBER, 2011

Page 2 of 12

01/03/2012

4:27:02 PM

Report Code: BAT_GL_DEPEXP - 92096

ACCOUNT NUMBER			ACCOUNT NAME		SHORT NAME					
TYPE	ACCTG. DATE	DOC. NO.	DESCRIPTION		CHECK NO.	PAYEE/PAYER NAME			DEBIT	CREDIT
ACCOUNT SUMMARY			ORIG. BUDGET	ADJ. BUDGET	ENCUMB	CURR. DR / CR	YTD DR / CR	CURR. BAL.	PCT	
100-70-4511-0000-3512			100-70-SCH BOARD-GENL-LIFE INS							
JE	07/29/2011	12500133	BENEFITS - 07/29/2011					5.01	0.00	
JE	08/31/2011	12500883	BENEFITS - 08/31/2011					5.00	0.00	
JE	09/30/2011	12501859	BENEFITS - 09/30/2011					5.00	0.00	
JE	10/31/2011	12502913	BENEFITS - 10/31/2011					5.00	0.00	
JE	11/30/2011	12503919	BENEFITS - 11/30/2011					5.00	0.00	
JE	12/30/2011	12504576	BENEFITS - 12/30/2011					5.00	0.00	
100-70-4511-0000-3512			115.00	115.00	30.03	30.01	30.01	54.96	47.79	
100-70-4511-0000-3520			100-70-SCH BOARD-GENL-UNEMPLT INS							
100-70-4511-0000-3520			116.00	116.00	0.00	0.00	0.00	116.00	100.00	
100-70-4511-0000-3542			100-70-SCH BOARD-GENL-FICA SUPPRT							
JE	07/29/2011	12500133	BENEFITS - 07/29/2011					319.79	0.00	
JE	08/31/2011	12500883	BENEFITS - 08/31/2011					366.24	0.00	
JE	09/30/2011	12501859	BENEFITS - 09/30/2011					366.56	0.00	
JE	10/31/2011	12502913	BENEFITS - 10/31/2011					344.05	0.00	
JE	11/30/2011	12503919	BENEFITS - 11/30/2011					390.22	0.00	
JE	12/30/2011	12504576	BENEFITS - 12/30/2011					355.77	0.00	
100-70-4511-0000-3542			2,951.00	2,951.00	793.45	2,142.63	2,142.63	14.92	0.51	
100-70-4511-0000-3560			100-70-SCH BOARD-GENL-PERS RETIREM							
JE	07/29/2011	12500133	BENEFITS - 07/29/2011					1,091.70	0.00	
JE	08/31/2011	12500883	BENEFITS - 08/31/2011					1,097.69	0.00	
JE	09/30/2011	12501859	BENEFITS - 09/30/2011					1,162.42	0.00	
JE	10/31/2011	12502913	BENEFITS - 10/31/2011					1,097.69	0.00	
JE	11/30/2011	12503919	BENEFITS - 11/30/2011					1,242.58	0.00	
JE	12/30/2011	12504576	BENEFITS - 12/30/2011					1,130.06	0.00	
100-70-4511-0000-3560			8,415.00	8,415.00	4,563.66	6,822.14	6,822.14	-2,970.80	-35.30	
100-70-4511-0000-4140			100-70-SCH BOARD-GENL-PRO-TECH LEG							
AP	08/01/2011	12301201	Legal fees through May 31, 2011				JERMAIN DUNNAGAN & OWENS PC	3,053.67	0.00	
AP	08/01/2011	12301201	Legal fees through May 31, 2011				JERMAIN DUNNAGAN & OWENS PC	-3,053.67	0.00	
AP	08/01/2011	12301201	Legal fees through May 31, 2011		FBV-148217		JERMAIN DUNNAGAN & OWENS PC	3,053.67	0.00	
AP	08/01/2011	12301201	Legal fees through May 31, 2011		FBV-148217		JERMAIN DUNNAGAN & OWENS PC	-3,053.67	0.00	

KENAI SCHOOL DISTRICT

DEPARTMENT EXPENSE REPORT FOR BEGINNING BALANCE THRU DECEMBER, 2011

Page 3 of 12

01/03/2012

4:27:02 PM

Report Code: BAT_GL_DEPEXP - 92096

ACCOUNT NUMBER			ACCOUNT NAME	SHORT NAME				DEBIT	CREDIT
TYPE	ACCTG. DATE	DOC. NO.	DESCRIPTION	CHECK NO.	PAYEE/PAYER NAME				
ACCOUNT SUMMARY			ORIG. BUDGET	ADJ. BUDGET	ENCUMB	CURR. DR / CR	YTD DR / CR	CURR. BAL.	PCT
AP	08/01/2011	12301201	Legal fees through May 31, 2011		FBV-148217	JERMAIN DUNNAGAN & OWENS PC		3,053.67	0.00
AP	08/01/2011	12301202	Legal fees through June 30, 2011			JERMAIN DUNNAGAN & OWENS PC		5,989.76	0.00
AP	08/01/2011	12301202	Legal fees through June 30, 2011			JERMAIN DUNNAGAN & OWENS PC		-5,989.76	0.00
AP	08/01/2011	12301202	Legal fees through June 30, 2011		FBV-148217	JERMAIN DUNNAGAN & OWENS PC		5,989.76	0.00
AP	08/01/2011	12301202	Legal fees through June 30, 2011		FBV-148217	JERMAIN DUNNAGAN & OWENS PC		-5,989.76	0.00
AP	08/01/2011	12301202	Legal fees through June 30, 2011		FBV-148217	JERMAIN DUNNAGAN & OWENS PC		5,989.76	0.00
CD	08/18/2011	12400962	OVERPMT REFUND INV 183199					0.00	1,765.77
AP	09/21/2011	12306096	Legal fees through August 31, 2011			JERMAIN DUNNAGAN & OWENS PC		1,326.00	0.00
AP	09/21/2011	12306096	Legal fees through August 31, 2011			JERMAIN DUNNAGAN & OWENS PC		-1,326.00	0.00
AP	09/21/2011	12306096	Legal fees through August 31, 2011		FBV-150096	JERMAIN DUNNAGAN & OWENS PC		1,326.00	0.00
AP	09/21/2011	12306096	Legal fees through August 31, 2011		FBV-150096	JERMAIN DUNNAGAN & OWENS PC		-1,326.00	0.00
AP	09/21/2011	12306096	Legal fees through August 31, 2011		FBV-150096	JERMAIN DUNNAGAN & OWENS PC		1,326.00	0.00
AP	10/24/2011	12311003	Legal fees through September 30, 2011			JERMAIN DUNNAGAN & OWENS PC		3,240.98	0.00
AP	10/24/2011	12311003	Legal fees through September 30, 2011			JERMAIN DUNNAGAN & OWENS PC		-3,240.98	0.00
AP	10/24/2011	12311003	Legal fees through September 30, 2011		FBV-152241	JERMAIN DUNNAGAN & OWENS PC		3,240.98	0.00
AP	10/24/2011	12311003	Legal fees through September 30, 2011		FBV-152241	JERMAIN DUNNAGAN & OWENS PC		-3,240.98	0.00
AP	10/24/2011	12311003	Legal fees through September 30, 2011		FBV-152241	JERMAIN DUNNAGAN & OWENS PC		3,240.98	0.00
AP	11/30/2011	12316941	Legal fees through October 31, 2011			JERMAIN DUNNAGAN & OWENS PC		370.50	0.00
AP	11/30/2011	12316941	Legal fees through October 31, 2011			JERMAIN DUNNAGAN & OWENS PC		-370.50	0.00
AP	11/30/2011	12316941	Legal fees through October 31, 2011		FBV-153696	JERMAIN DUNNAGAN & OWENS PC		370.50	0.00
AP	11/30/2011	12316941	Legal fees through October 31, 2011		FBV-153696	JERMAIN DUNNAGAN & OWENS PC		-370.50	0.00
AP	11/30/2011	12316941	Legal fees through October 31, 2011		FBV-153696	JERMAIN DUNNAGAN & OWENS PC		370.50	0.00
AP	12/19/2011	12320072	Legal fees through November 30, 2011			JERMAIN DUNNAGAN & OWENS PC		1,014.00	0.00
AP	12/19/2011	12320072	Legal fees through November 30, 2011			JERMAIN DUNNAGAN & OWENS PC		-1,014.00	0.00
AP	12/19/2011	12320072	Legal fees through November 30, 2011		FBV-154315	JERMAIN DUNNAGAN & OWENS PC		1,014.00	0.00
AP	12/19/2011	12320072	Legal fees through November 30, 2011		FBV-154315	JERMAIN DUNNAGAN & OWENS PC		-1,014.00	0.00
AP	12/19/2011	12320072	Legal fees through November 30, 2011		FBV-154315	JERMAIN DUNNAGAN & OWENS PC		1,014.00	0.00
100-70-4511-0000-4140			100,000.00	100,000.00	0.00	13,229.14	13,229.14	86,770.86	86.77
100-70-4511-0000-4201			100-70-SCH BOARD-GENL-MEALS						
JE	07/11/2011	12500046	FY11 A/P Listing					0.00	12.00
AP	07/13/2011	12300198	TRAVEL-MEALS		FBV-147744	HOHL, LYNN		12.00	0.00
AP	08/03/2011	12301094	TRAVEL-MEALS		FBV-148099	HOHL, LYNN		5.00	0.00
AP	09/10/2011	12304471	Dinner for SB on August 8		FBV-1370	BMO MASTERCARD		225.00	0.00

KENAI SCHOOL DISTRICT

DEPARTMENT EXPENSE REPORT FOR BEGINNING BALANCE THRU DECEMBER, 2011

Page 4 of 12

01/03/2012

4:27:02 PM

Report Code: BAT_GL_DEPEXP - 92096

ACCOUNT NUMBER			ACCOUNT NAME		SHORT NAME				DEBIT	CREDIT
TYPE	ACCTG. DATE	DOC. NO.	DESCRIPTION		CHECK NO.	PAYEE/PAYER NAME				
ACCOUNT SUMMARY			ORIG. BUDGET	ADJ. BUDGET	ENCUMB	CURR. DR / CR	YTD DR / CR	CURR. BAL.	PCT	
AP	10/24/2011	12311006	Cater School Board dinner - June 6, 2011			TOPS #196		225.00	0.00	
AP	10/24/2011	12311006	Cater School Board dinner - June 6, 2011			TOPS #196		-225.00	0.00	
AP	10/24/2011	12311006	Cater School Board dinner - June 6, 2011		FBV-152946	TOPS #196		225.00	0.00	
AP	10/24/2011	12311006	Cater School Board dinner - June 6, 2011		FBV-152946	TOPS #196		-225.00	0.00	
AP	10/24/2011	12311006	Cater School Board dinner - June 6, 2011		FBV-152946	TOPS #196		225.00	0.00	
AP	11/16/2011	12315500	TRAVEL-MEALS		FBV-152701	HOHL, LYNN		125.00	0.00	
JE	12/02/2011	12504100	SNS Invoice 12-102					119.00	0.00	
JE	12/06/2011	12504386	Professional development travel					0.00	125.00	
AP	12/07/2011	12316898	TRAVEL - MEALS		FBV-153680	HILTS, EDITH-HELEN		12.00	0.00	
AP	12/14/2011	12317786	TRAVEL - MEALS		FBV-153978	HOHL, LYNN		32.00	0.00	
AP	12/14/2011	12319602	TRAVEL - MEALS		FBV-154146	TACHICK, SALLY		96.00	0.00	
100-70-4511-0000-4201			3,500.00	3,500.00	0.00	714.00	714.00	2,786.00	79.60	
100-70-4511-0000-4202			100-70-SCH BOARD-GENL-MILEAGE							
AP	08/03/2011	12301092	TRAVEL-MILEAGE		FBV-148076	CRAWFORD, LORRAINE		12.75	0.00	
AP	08/03/2011	12301093	TRAVEL-MILEAGE		FBV-148098	HILTS, EDITH-HELEN		76.50	0.00	
AP	08/03/2011	12301094	TRAVEL-MILEAGE		FBV-148099	HOHL, LYNN		93.84	0.00	
AP	08/03/2011	12301095	TRAVEL-MILEAGE		FBV-148080	DOWNING, ELIZABETH		76.50	0.00	
AP	08/17/2011	12302142	TRAVEL-MILEAGE		FBV-148356	CRAWFORD, LORRAINE		12.75	0.00	
AP	08/17/2011	12302143	TRAVEL-MILEAGE		FBV-148366	DOWNING, ELIZABETH		76.50	0.00	
AP	08/17/2011	12302146	TRAVEL-MILEAGE		FBV-148418	HOHL, LYNN		93.84	0.00	
AP	08/17/2011	12302147	TRAVEL-MILEAGE		FBV-148419	HOLT, WILLIAM		18.87	0.00	
AP	08/31/2011	12302827	TRAVEL-MILEAGE		FBV-148917	HILTS, EDITH-HELEN		76.50	0.00	
AP	08/31/2011	12302828	TRAVEL-MILEAGE		FBV-148917	HILTS, EDITH-HELEN		82.62	0.00	
AP	09/28/2011	12306102	TRAVEL-MILEAGE		FBV-149970	ARNESS, JOE		96.90	0.00	
JE	10/10/2011	12502268	CORRECTION TO 9/28/11 MILEAGE EXPENSES					76.50	0.00	
JE	10/10/2011	12502268	CORRECTION TO 9/28/11 MILEAGE EXPENSES					85.68	0.00	
JE	10/10/2011	12502268	CORRECTION TO 9/28/11 MILEAGE EXPENSES					12.75	0.00	
AP	10/26/2011	12311209	TRAVEL-MILEAGE		FBV-151423	HOHL, LYNN		95.88	0.00	
AP	10/26/2011	12311212	TRAVEL-MILEAGE		FBV-151271	ARNESS, JOE		20.40	0.00	
AP	10/26/2011	12311213	TRAVEL-MILEAGE		FBV-151367	DOWNING, ELIZABETH		76.50	0.00	
AP	11/02/2011	12311426	TRAVEL-MILEAGE		FBV-151796	HILTS, EDITH-HELEN		76.50	0.00	
AP	11/16/2011	12315500	TRAVEL-MILEAGE		FBV-152701	HOHL, LYNN		186.66	0.00	
AP	11/30/2011	12316383	TRAVEL - MILEAGE		FBV-153412	ERNST, ANNALEAH		65.48	0.00	

KENAI SCHOOL DISTRICT

DEPARTMENT EXPENSE REPORT FOR BEGINNING BALANCE THRU DECEMBER, 2011

Page 5 of 12

01/03/2012

4:27:02 PM

Report Code: BAT_GL_DEPEXP - 92096

ACCOUNT NUMBER			ACCOUNT NAME	SHORT NAME				DEBIT	CREDIT
TYPE	ACCTG. DATE	DOC. NO.	DESCRIPTION	CHECK NO.	PAYEE/PAYER NAME				
ACCOUNT SUMMARY			ORIG. BUDGET	ADJ. BUDGET	ENCUMB	CURR. DR / CR	YTD DR / CR	CURR. BAL.	PCT
AP	11/30/2011	12316385	TRAVEL - MILEAGE		FBV-153430	HOLT, WILLIAM		18.87	0.00
AP	11/30/2011	12316388	TRAVEL - MILEAGE		FBV-153375	ARNESS, JOE		20.40	0.00
AP	11/30/2011	12316390	TRAVEL - MILEAGE		FBV-153399	CRAWFORD, LORRAINE		12.75	0.00
AP	11/30/2011	12316393	TRAVEL - MILEAGE		FBV-153406	DOWNING, ELIZABETH		76.50	0.00
JE	12/06/2011	12504386	Professional development travel					0.00	186.66
AP	12/14/2011	12317769	TRAVEL - MILEAGE		FBV-153927	DOWNING, ELIZABETH		76.50	0.00
AP	12/14/2011	12317771	TRAVEL - MILEAGE		FBV-153863	ARNESS, JOE		20.40	0.00
AP	12/14/2011	12317786	TRAVEL - MILEAGE		FBV-153978	HOHL, LYNN		93.84	0.00
AP	12/14/2011	12317787	TRAVEL - MILEAGE		FBV-153982	HOLT, WILLIAM		18.87	0.00
AP	12/14/2011	12317793	TRAVEL - MILEAGE		FBV-153937	ERNST, ANNALEAH		32.74	0.00
AP	12/14/2011	12319602	TRAVEL - MILEAGE		FBV-154146	TACHICK, SALLY		153.00	0.00
AP	12/21/2011	12320155	TRAVEL-MILEAGE		FBV-154301	HILTS, EDITH-HELEN		76.50	0.00
100-70-4511-0000-4202			3,500.00	3,500.00	0.00	1,827.63	1,827.63	1,672.37	47.78
100-70-4511-0000-4203			100-70-SCH BOARD-GENL-OTHR TRVL						
AP	08/10/2011	12301907	Routine Travel to SB meeting		FBV-1361	BMO MASTERCARD		105.00	0.00
AP	08/10/2011	12301908	Routine travel to SB meeting		FBV-1361	BMO MASTERCARD		179.00	0.00
AP	08/10/2011	12301909	Routine travel		FBV-1361	BMO MASTERCARD		101.97	0.00
AP	09/10/2011	12304322	Routine Travel to SB Meeting		FBV-1370	BMO MASTERCARD		99.00	0.00
AP	09/10/2011	12304323	Routine travel to SB meeting		FBV-1370	BMO MASTERCARD		105.00	0.00
AP	09/10/2011	12304324	Routine travel to SB planning session		FBV-1370	BMO MASTERCARD		52.50	0.00
AP	09/10/2011	12304325	Travel to reapportionment meeting		FBV-1370	BMO MASTERCARD		149.00	0.00
AP	09/28/2011	12306099	TRAVEL-MILEAGE		FBV-149999	BRETT-VADLA, KAREN		76.50	0.00
AP	09/28/2011	12306100	TRAVEL-MILEAGE		FBV-150079	HOLT, WILLIAM		85.68	0.00
AP	09/28/2011	12306101	TRAVEL-MILEAGE		FBV-150028	CRAWFORD, LORRAINE		12.75	0.00
JE	10/10/2011	12502268	CORRECTION TO 9/28/11 MILEAGE EXPENSES					0.00	76.50
JE	10/10/2011	12502268	CORRECTION TO 9/28/11 MILEAGE EXPENSES					0.00	85.68
JE	10/10/2011	12502268	CORRECTION TO 9/28/11 MILEAGE EXPENSES					0.00	12.75
AP	10/11/2011	12308103	Travel to DW Inservice and worksession		FBV-1377	BMO MASTERCARD		50.00	0.00
AP	10/11/2011	12308104	Routine travel for SB meetings		FBV-1377	BMO MASTERCARD		89.00	0.00
AP	10/11/2011	12308105	Routine travel to SB meeting		FBV-1377	BMO MASTERCARD		105.00	0.00
AP	11/10/2011	12313800	Routine travel to SB meeting		FBV-1384	BMO MASTERCARD		83.74	0.00
AP	11/10/2011	12313801	Routine travel for Board meetings		FBV-1384	BMO MASTERCARD		108.00	0.00
AP	11/10/2011	12313802	Routine travel for Board meetings		FBV-1384	BMO MASTERCARD		81.00	0.00

KENAI SCHOOL DISTRICT

DEPARTMENT EXPENSE REPORT FOR BEGINNING BALANCE THRU DECEMBER, 2011

Page 6 of 12

01/03/2012

4:27:02 PM

Report Code: BAT_GL_DEPEXP - 92096

ACCOUNT NUMBER			ACCOUNT NAME	SHORT NAME				DEBIT	CREDIT
TYPE	ACCTG. DATE	DOC. NO.	DESCRIPTION	CHECK NO.	PAYEE/PAYER NAME				
ACCOUNT SUMMARY			ORIG. BUDGET	ADJ. BUDGET	ENCUMB	CURR. DR / CR	YTD DR / CR	CURR. BAL.	PCT
AP	11/10/2011	12313803	Routine travel for Board meetings		FBV-1384	BMO MASTERCARD		105.00	0.00
AP	11/10/2011	12313804	Routine travel for Board meetings		FBV-1384	BMO MASTERCARD		79.00	0.00
AP	11/10/2011	12313805	Routine travel to SB meeting		FBV-1384	BMO MASTERCARD		79.00	0.00
AP	12/11/2011	12318184	Routine travel to SB meeting		FBV-1391	BMO MASTERCARD		104.94	0.00
AP	12/11/2011	12318185	Routine travel to SB meeting		FBV-1391	BMO MASTERCARD		79.00	0.00
AP	12/11/2011	12318187	Routine travel to SB meeting		FBV-1391	BMO MASTERCARD		105.00	0.00
AP	12/11/2011	12318465	AASB Conf Hotel-Annaleah		FBV-1391	BMO MASTERCARD		209.20	0.00
AP	12/14/2011	12319602	TRAVEL - OTHER		FBV-154146	TACHICK, SALLY		246.00	0.00
100-70-4511-0000-4203			3,928.00	3,928.00	0.00	2,315.35	2,315.35	1,612.65	41.06
100-70-4511-0000-4331			100-70-SCH BOARD-GENL-POSTAGE						
AP	08/10/2011	12301759	POSTAGE		FBV-148223	KENAI PENINSULA BOROUGH		0.88	0.00
AP	10/19/2011	12310387	POSTAGE		FBV-151037	KENAI PENINSULA BOROUGH		1.52	0.00
AP	12/20/2011	12320126	POSTAGE			KENAI PENINSULA BOROUGH		3.96	0.00
AP	12/20/2011	12320126	POSTAGE			KENAI PENINSULA BOROUGH		-3.96	0.00
AP	12/20/2011	12320126	POSTAGE			KENAI PENINSULA BOROUGH		3.96	0.00
AP	12/20/2011	12320126	POSTAGE			KENAI PENINSULA BOROUGH		-3.96	0.00
AP	12/28/2011	12320397	POSTAGE		FBV-154548	KENAI PENINSULA BOROUGH		3.96	0.00
100-70-4511-0000-4331			1,500.00	1,500.00	0.00	6.36	6.36	1,493.64	99.58
100-70-4511-0000-4402			100-70-SCH BOARD-GENL-PURCH SVC						
PO	06/30/2011	1220419	Advertising services			PENINSULA CLARION		4,000.00	0.00
BA	07/01/2011	3	PO'S BROUGHT FORWARD					130.09	0.00
PO	07/01/2011	1120291	PO'S BROUGHT FORWARD			PENINSULA CLARION		130.09	0.00
PO	07/18/2011	1220638	Printing services			KENAI PENINSULA BOROUGH		1,200.00	0.00
AP	07/20/2011	1220419	Advertising services		FBV-147920	PENINSULA CLARION		274.85	0.00
AP	08/24/2011	1220419	Advertising services		FBV-148716	PENINSULA CLARION		310.70	0.00
AP	09/21/2011	1220638	Printing services		FBV-149754	KENAI PENINSULA BOROUGH		59.50	0.00
AP	09/21/2011	1220638	Printing services		FBV-149754	KENAI PENINSULA BOROUGH		77.67	0.00
AP	10/05/2011	1220419	Advertising services		FBV-150580	PENINSULA CLARION		262.90	0.00
AP	10/19/2011	1220638	Printing services		FBV-151037	KENAI PENINSULA BOROUGH		95.40	0.00
AP	11/09/2011	1220419	Advertising services		FBV-152348	PENINSULA CLARION		298.75	0.00
AP	11/10/2011	12314070	Advertise SB meeting		FBV-1384	BMO MASTERCARD		372.90	0.00
AP	11/16/2011	1220419	Advertising services		FBV-152824	PENINSULA CLARION		239.00	0.00
AP	12/14/2011	1220419	Advertising services		FBV-154078	PENINSULA CLARION		310.70	0.00

KENAI SCHOOL DISTRICT

DEPARTMENT EXPENSE REPORT FOR BEGINNING BALANCE THRU DECEMBER, 2011

Page 7 of 12

01/03/2012

4:27:02 PM

Report Code: BAT_GL_DEPEXP - 92096

ACCOUNT NUMBER			ACCOUNT NAME		SHORT NAME				DEBIT	CREDIT
TYPE	ACCTG. DATE	DOC. NO.	DESCRIPTION		CHECK NO.	PAYEE/PAYER NAME				
ACCOUNT SUMMARY			ORIG. BUDGET	ADJ. BUDGET	ENCUMB	CURR. DR / CR	YTD DR / CR	CURR. BAL.	PCT	
AP	12/28/2011	1220638	Printing services		FBV-154548	KENAI PENINSULA BOROUGH		115.13	0.00	
100-70-4511-0000-4402			5,250.00	5,380.09	3,285.49	2,417.50	2,417.50	-322.90	-6.00	
100-70-4511-0000-4501			100-70-SCH BOARD-GENL-SUPPLIES							
BA	07/01/2011	3	PO'S BROUGHT FORWARD					598.15	0.00	
BA	07/01/2011	3	PO'S BROUGHT FORWARD					208.25	0.00	
PO	07/01/2011	1125891	PO'S BROUGHT FORWARD			KENAI PENINSULA BOROUGH		598.15	0.00	
PO	07/01/2011	1126804	PO'S BROUGHT FORWARD			IKON OFFICE SOLUTIONS		208.25	0.00	
JE	07/11/2011	12500046	FY11 A/P Listing					0.00	179.90	
AP	07/13/2011	12300307	BOOKS FOR BOARD		FBV-147815	TACHICK, SALLY		179.90	0.00	
AP	08/17/2011	1126804	Ink Cartridges		FBV-148423	IKON OFFICE SOLUTIONS		208.25	0.00	
AP	08/24/2011	12302614	SUPPLIES		FBV-148745	TACHICK, SALLY		15.00	0.00	
AP	09/10/2011	12304470	Beverages for SB dinner		FBV-1370	BMO MASTERCARD		16.63	0.00	
AP	09/10/2011	12304473	Board planning session		FBV-1370	BMO MASTERCARD		25.91	0.00	
JE	10/06/2011	12502140	** Warehouse Requisition **					12.10	0.00	
PO	10/25/2011	1222844	Signature Images			SUNGARD AVANTGARD LLC		900.00	0.00	
PO	10/27/2011	1222856	Signature Plate			STANDARD REGISTER		360.00	0.00	
AP	11/10/2011	12314074	Beverages for SB dinner		FBV-1384	BMO MASTERCARD		8.48	0.00	
AP	11/10/2011	12314075	Name place for SB student rep.		FBV-1384	BMO MASTERCARD		25.00	0.00	
AP	11/16/2011	1125891	PRINTING		FBV-152734	KENAI PENINSULA BOROUGH		54.40	0.00	
AP	12/11/2011	12318464	Printer cartridge		FBV-1391	BMO MASTERCARD		91.21	0.00	
AP	12/20/2011	1125891	PRINTING			KENAI PENINSULA BOROUGH		-115.13	0.00	
AP	12/20/2011	1125891	PRINTING			KENAI PENINSULA BOROUGH		115.13	0.00	
AP	12/20/2011	1125891	PRINTING			KENAI PENINSULA BOROUGH		-115.13	0.00	
AP	12/20/2011	1125891	PRINTING			KENAI PENINSULA BOROUGH		115.13	0.00	
AP	12/28/2011	1125891	PO'S BROUGHT FORWARD			KENAI PENINSULA BOROUGH		0.00	0.00	
AP	12/29/2011	1222856	Signature Plate			STANDARD REGISTER		360.00	0.00	
100-70-4511-0000-4501			5,000.00	5,806.40	900.00	816.98	816.98	4,089.42	70.43	
100-70-4511-0000-4503			100-70-SCH BOARD-GENL-SOFTWARE							
AP	08/10/2011	12301935	Softward for SB laptops		FBV-1361	BMO MASTERCARD		514.90	0.00	
100-70-4511-0000-4503			0.00	0.00	0.00	514.90	514.90	-514.90	0.00	
100-70-4511-0000-4850			100-70-SCH BOARD-GENL-STIPENDS							
JE	07/29/2011	12500132	PAYROLL - 07/29/2011					2,800.00	0.00	

KENAI SCHOOL DISTRICT

DEPARTMENT EXPENSE REPORT FOR BEGINNING BALANCE THRU DECEMBER, 2011

Page 8 of 12

01/03/2012

4:27:02 PM

Report Code: BAT_GL_DEPEXP - 92096

ACCOUNT NUMBER			ACCOUNT NAME	SHORT NAME				DEBIT	CREDIT
TYPE	ACCTG. DATE	DOC. NO.	DESCRIPTION	CHECK NO.	PAYEE/PAYER NAME				
ACCOUNT SUMMARY			ORIG. BUDGET	ADJ. BUDGET	ENCUMB	CURR. DR / CR	YTD DR / CR	CURR. BAL.	PCT
JE	08/31/2011	12500882	PAYROLL - 08/31/2011					2,800.00	0.00
JE	09/30/2011	12501858	PAYROLL - 09/30/2011					2,800.00	0.00
JE	10/31/2011	12502912	PAYROLL - 10/31/2011					2,800.00	0.00
JE	11/30/2011	12503918	PAYROLL - 11/30/2011					2,800.00	0.00
BA	12/09/2011	470	12/05/11 Budget revision					-8,200.00	0.00
JE	12/30/2011	12504575	PAYROLL - 12/30/2011					2,800.00	0.00
100-70-4511-0000-4850			42,000.00	33,800.00	0.00	16,800.00	16,800.00	17,000.00	50.30
100-70-4511-0000-4901			100-70-SCH BOARD-GENL-OTHER EXP						
AP	11/10/2011	12314071	Subscription - duplicate charge		FBV-1384	BMO MASTERCARD		48.00	0.00
AP	11/10/2011	12314072	Credit subscription charge		FBV-1384	BMO MASTERCARD		-48.00	0.00
100-70-4511-0000-4901			30,000.00	30,000.00	0.00	0.00	0.00	30,000.00	100.00
100-70-4511-0125-4201			100-70-SCH BOARD-LEGISLATIVE -MEALS						
								0.00	0.00
100-70-4511-0125-4201			2,000.00	2,000.00	0.00	0.00	0.00	2,000.00	100.00
100-70-4511-0125-4202			100-70-SCH BOARD-LEGISLATIVE -MILEAGE						
								0.00	0.00
100-70-4511-0125-4202			1,000.00	1,000.00	0.00	0.00	0.00	1,000.00	100.00
100-70-4511-0125-4203			100-70-SCH BOARD-LEGISLATIVE -OTHR TRVL						
								0.00	0.00
100-70-4511-0125-4203			11,000.00	11,000.00	0.00	0.00	0.00	11,000.00	100.00
100-70-4511-0126-4201			100-70-SCH BOARD-PROFESSIOAL -MEALS						
AP	11/30/2011	12316387	TRAVEL - MEALS		FBV-153375	ARNESS, JOE		48.00	0.00
AP	11/30/2011	12316391	TRAVEL - MEALS		FBV-153399	CRAWFORD, LORRAINE		44.00	0.00
AP	11/30/2011	12316392	TRAVEL - MEALS		FBV-153406	DOWNING, ELIZABETH		48.00	0.00
JE	12/06/2011	12504386	Professional development travel					125.00	0.00
AP	12/07/2011	12316897	TRAVEL - MEALS		FBV-153680	HILTS, EDITH-HELEN		128.00	0.00
AP	12/21/2011	12320142	TRAVEL-MEALS		FBV-154217	BRETT-VADLA, KAREN "PENNY"		136.00	0.00
AP	12/21/2011	12320205	TRAVEL-MEALS		FBV-154198	ANDERSON, MARTIN		108.00	0.00
CD	12/22/2011	12412366	REIMB MEALS/HOTEL - SAMMY CRAWFORD					0.00	15.00
100-70-4511-0126-4201			1,000.00	1,000.00	0.00	622.00	622.00	378.00	37.80

KENAI SCHOOL DISTRICT

DEPARTMENT EXPENSE REPORT FOR BEGINNING BALANCE THRU DECEMBER, 2011

Page 9 of 12

01/03/2012

4:27:02 PM

Report Code: BAT_GL_DEPEXP - 92096

ACCOUNT NUMBER			ACCOUNT NAME		SHORT NAME				DEBIT	CREDIT	
TYPE	ACCTG. DATE	DOC. NO.	DESCRIPTION		CHECK NO.	PAYEE/PAYER NAME					
ACCOUNT SUMMARY			ORIG. BUDGET	ADJ. BUDGET	ENCUMB	CURR. DR / CR	YTD DR / CR	CURR. BAL.	PCT		
100-70-4511-0126-4202			100-70-SCH BOARD-PROFESSIOAL -MILEAGE								
AP	11/30/2011	12316387	TRAVEL - MILEAGE		FBV-153375	ARNESS, JOE		163.20	0.00		
AP	11/30/2011	12316392	TRAVEL - MILEAGE		FBV-153406	DOWNING, ELIZABETH		265.20	0.00		
JE	12/06/2011	12504386	Professional development travel					186.66	0.00		
AP	12/07/2011	12316897	TRAVEL - MILEAGE		FBV-153680	HILTS, EDITH-HELEN		225.42	0.00		
AP	12/07/2011	12317036	TRAVEL - MILEAGE		FBV-153640	ERNST, ANNALEAH		25.70	0.00		
AP	12/14/2011	12317795	TRAVEL - MILEAGE		FBV-153964	GRAEFF, GRETCHEN E		12.85	0.00		
AP	12/21/2011	12320142	TRAVEL-MILEAGE		FBV-154217	BRETT-VADLA, KAREN "PENNY"		5.10	0.00		
AP	12/21/2011	12320205	TRAVEL-MILEAGE		FBV-154198	ANDERSON, MARTIN		142.80	0.00		
100-70-4511-0126-4202			1,000.00	1,000.00	0.00	1,026.93	1,026.93	-26.93	-2.69		
100-70-4511-0126-4203			100-70-SCH BOARD-PROFESSIOAL -OTHR TRVL								
AP	11/10/2011	12313789	NSBA Conference Registration		FBV-1384	BMO MASTERCARD		725.00	0.00		
AP	11/30/2011	12316391	TRAVEL - OTHER		FBV-153399	CRAWFORD, LORRAINE		20.00	0.00		
AP	12/07/2011	12317036	TRAVEL - OTHER		FBV-153640	ERNST, ANNALEAH		82.50	0.00		
AP	12/11/2011	12318156	AASB Annual Conference-Marty A.		FBV-1391	BMO MASTERCARD		128.60	0.00		
AP	12/11/2011	12318171	NSBA Travel-Sammy C		FBV-1391	BMO MASTERCARD		915.69	0.00		
AP	12/11/2011	12318172	AASB Travel-Sammy C		FBV-1391	BMO MASTERCARD		169.00	0.00		
AP	12/11/2011	12318173	AASB Travel Hotel-Sammy C.		FBV-1391	BMO MASTERCARD		547.00	0.00		
AP	12/11/2011	12318174	AASB Travel Hotel-Lynn H		FBV-1391	BMO MASTERCARD		643.00	0.00		
AP	12/11/2011	12318183	AASB Conf Hotel-Liz D		FBV-1391	BMO MASTERCARD		385.80	0.00		
AP	12/11/2011	12318186	NSBA Conf Registration-Sunni		FBV-1391	BMO MASTERCARD		725.00	0.00		
AP	12/11/2011	12318188	AASB Conf Hotel-Sunni		FBV-1391	BMO MASTERCARD		476.00	0.00		
AP	12/11/2011	12318189	NSBA Conf Registration-Lynn H		FBV-1391	BMO MASTERCARD		725.00	0.00		
AP	12/11/2011	12318463	AASb Conf flight-Annaleah		FBV-1391	BMO MASTERCARD		99.00	0.00		
AP	12/11/2011	12318559	AASB Conf Hotel-Joe A		FBV-1391	BMO MASTERCARD		181.41	0.00		
AP	12/13/2011	12319493	Registration - Liz Downing			ASSOCIATION OF ALASKA SCHOOL B		490.00	0.00		
AP	12/13/2011	12319493	Registration - Liz Downing			ASSOCIATION OF ALASKA SCHOOL B		-490.00	0.00		
AP	12/13/2011	12319493	Registration - Liz Downing		FBV-154203	ASSOCIATION OF ALASKA SCHOOL B		490.00	0.00		
AP	12/13/2011	12319493	Registration - Sunni Hilts			ASSOCIATION OF ALASKA SCHOOL B		490.00	0.00		
AP	12/13/2011	12319493	Registration - Sunni Hilts			ASSOCIATION OF ALASKA SCHOOL B		-490.00	0.00		
AP	12/13/2011	12319493	Registration - Sunni Hilts		FBV-154203	ASSOCIATION OF ALASKA SCHOOL B		490.00	0.00		
AP	12/13/2011	12319493	Registration - Marty Anderson			ASSOCIATION OF ALASKA SCHOOL B		490.00	0.00		
AP	12/13/2011	12319493	Registration - Marty Anderson			ASSOCIATION OF ALASKA SCHOOL B		-490.00	0.00		

KENAI SCHOOL DISTRICT

DEPARTMENT EXPENSE REPORT FOR BEGINNING BALANCE THRU DECEMBER, 2011

Page 10 of 12

01/03/2012

4:27:02 PM

Report Code: BAT_GL_DEPEXP - 92096

ACCOUNT NUMBER			ACCOUNT NAME		SHORT NAME				DEBIT	CREDIT
TYPE	ACCTG. DATE	DOC. NO.	DESCRIPTION		CHECK NO.	PAYEE/PAYER NAME				
ACCOUNT SUMMARY			ORIG. BUDGET	ADJ. BUDGET	ENCUMB	CURR. DR / CR	YTD DR / CR	CURR. BAL.	PCT	
AP	12/13/2011	12319493	Registration - Marty Anderson		FBV-154203	ASSOCIATION OF ALASKA SCHOOL B		490.00	0.00	
AP	12/13/2011	12319493	Registration - Sammy Crawford			ASSOCIATION OF ALASKA SCHOOL B		490.00	0.00	
AP	12/13/2011	12319493	Registration - Sammy Crawford			ASSOCIATION OF ALASKA SCHOOL B		-490.00	0.00	
AP	12/13/2011	12319493	Registration - Sammy Crawford		FBV-154203	ASSOCIATION OF ALASKA SCHOOL B		490.00	0.00	
AP	12/13/2011	12319493	Registration - Penny Vadla			ASSOCIATION OF ALASKA SCHOOL B		490.00	0.00	
AP	12/13/2011	12319493	Registration - Penny Vadla			ASSOCIATION OF ALASKA SCHOOL B		-490.00	0.00	
AP	12/13/2011	12319493	Registration - Penny Vadla		FBV-154203	ASSOCIATION OF ALASKA SCHOOL B		490.00	0.00	
AP	12/13/2011	12319493	Registration - Joe Arness			ASSOCIATION OF ALASKA SCHOOL B		490.00	0.00	
AP	12/13/2011	12319493	Registration - Joe Arness			ASSOCIATION OF ALASKA SCHOOL B		-490.00	0.00	
AP	12/13/2011	12319493	Registration - Joe Arness		FBV-154203	ASSOCIATION OF ALASKA SCHOOL B		490.00	0.00	
AP	12/13/2011	12319493	Registration - Lynn Hohl			ASSOCIATION OF ALASKA SCHOOL B		490.00	0.00	
AP	12/13/2011	12319493	Registration - Lynn Hohl			ASSOCIATION OF ALASKA SCHOOL B		-490.00	0.00	
AP	12/13/2011	12319493	Registration - Lynn Hohl		FBV-154203	ASSOCIATION OF ALASKA SCHOOL B		490.00	0.00	
AP	12/13/2011	12319493	Experienced Board Registration - Sunni Hilts			ASSOCIATION OF ALASKA SCHOOL B		200.00	0.00	
AP	12/13/2011	12319493	Experienced Board Registration - Sunni Hilts			ASSOCIATION OF ALASKA SCHOOL B		-200.00	0.00	
AP	12/13/2011	12319493	Experienced Board Registration - Sunni Hilts		FBV-154203	ASSOCIATION OF ALASKA SCHOOL B		200.00	0.00	
AP	12/13/2011	12319500	Student Registration - Annaleah Ernst			ASSOCIATION OF ALASKA SCHOOL B		255.00	0.00	
AP	12/14/2011	12317795	TRAVEL - OTHER		FBV-153964	GRAEFF, GRETCHEN E		175.00	0.00	
AP	12/14/2011	12319664	Registration - Lynn Hohl			ASSOCIATION OF ALASKA SCHOOL B		350.00	0.00	
AP	12/14/2011	12319664	Registration - Lynn Hohl			ASSOCIATION OF ALASKA SCHOOL B		-350.00	0.00	
AP	12/14/2011	12319664	Registration - Lynn Hohl		FBV-154203	ASSOCIATION OF ALASKA SCHOOL B		350.00	0.00	
AP	12/14/2011	12319664	Registration - Tim Navarre			ASSOCIATION OF ALASKA SCHOOL B		350.00	0.00	
AP	12/14/2011	12319664	Registration - Tim Navarre			ASSOCIATION OF ALASKA SCHOOL B		-350.00	0.00	
AP	12/14/2011	12319664	Registration - Tim Navarre		FBV-154203	ASSOCIATION OF ALASKA SCHOOL B		350.00	0.00	
AP	12/20/2011	12320133	Air fare for Sunni Hilts to attend NSBA Conference			DUMMY VENDOR		707.69	0.00	
AP	12/21/2011	12320142	TRAVEL-OTHER		FBV-154217	BRETT-VADLA, KAREN "PENNY"		629.40	0.00	
CD	12/22/2011	12412366	REIMB MEALS/HOTEL - SAMMY CRAWFORD					0.00	95.00	
100-70-4511-0126-4203			12,000.00	12,000.00	0.00	11,825.09	11,825.09	174.91	1.46	
Location : 70 - BOARD OF EDUCAT			346,888.00	326,358.49	60,421.55	110,825.55	110,825.55	155,111.39	47.53	
Fund : 100 - OPERATING FUND			346,888.00	326,358.49	60,421.55	110,825.55	110,825.55	155,111.39	47.53	

KENAI SCHOOL DISTRICT

DEPARTMENT EXPENSE REPORT FOR BEGINNING BALANCE THRU DECEMBER, 2011

Report Code: BAT_GL_DEPEXP - 92096

Page 11 of 12

01/03/2012

4:27:02 PM

KENAI SCHOOL DISTRICT

DEPARTMENT EXPENSE REPORT FOR BEGINNING BALANCE THRU DECEMBER, 2011

Page 12 of 12

01/03/2012

4:27:02 PM

Report Code: BAT_GL_DEPEXP - 92096

Search Criteria

Report Title : GLEXLINE

Account Element Filters : 1 - Fund - from: 100 to: 100, 8 - Location - from: 70 to: 70, 3 - Function - from: 0000 to: 9999, 10 - Program - from: 0000 to: 9999, 5 - Object - from: 3000 to: 9999

Responsibility Group : 137,131

Account Grouping : 1 - Fund - All, 8 - Location - All

Account Sorting : None

Document Type : All Document Types

Accounting Period : Beginning Balance

Thru Report Period : December, 2011

**Kenai Peninsula Borough School District
2011-2012**

School Board Travel Statement

<i>Month</i>	<i>Routine Travel</i>	<i>Board Meals</i>	<i>Lobbying</i>	<i>Prof. Development</i>
July	\$239.59	\$17.00		
August	\$1,006.64	\$5.00		
September	\$677.33	\$225.00		
October	\$513.28	\$225.00		
November	\$806.24	\$12.00		
Joe Arness Mileage and meals for AASB Annual Conference				\$211.20
Sammy Crawford Meals and cab fare for AASB Annual Conference				\$64.00
Lynn Hohl Meals and mileage for AASB Annual Conference				\$311.66
Liz Downing Meals and mileage for AASB Annual Conference				\$313.20
Sammy Crawford Registration for NSBA Annual Conference				\$725.00
December	\$607.79	\$163.00		
Sammy Crawford Air fare for NSBA Annual Conference				\$915.69
Sunni Hilts Meals , mileage, hotel and registration for AASB Annual Conference				\$1,519.42
Penny Vadla Meals , mileage, hotel and registration for AASB Annual Conference				\$1,260.50
Marty Anderson Meals , mileage, hotel and registration for AASB Annual Conference				\$869.40
Annaleah Ernst and Gretchen Graeff Meals , mileage, hotel and registration for AASB Annual Conference				\$859.25
Liz Downing Hotel and registration for AASB Annual Conference				\$875.80
Sammy Crawford Air fare, hotel and registration for AASB Annual Conference				\$1,111.00
Lynn Hohl Hotel and registration for AASB Annual Conference and Boardsmanship Training				\$1,483.00
Sunni Hilts Air fare and registration for NSBA Annual Conference				\$1,432.69

<i>Month</i>	<i>Routine Travel</i>	<i>Board Meals</i>	<i>Lobbying</i>	<i>Prof. Development</i>
Tim Navarre				
Registration for AASB Boardsmanship Training				\$350.00
Joe Arness				
Hhotel and registration for AASB Annual Conference				\$671.41
Lynn Hohl				
Registration for NSBA Annual Conference				\$725.00
TOTAL	\$3,850.87	\$647.00	\$0.00	\$13,698.22



KENAI PENINSULA BOROUGH SCHOOL DISTRICT
Administrator Meeting Agenda
Challenger Learning Center
Wednesday, January 25, 2012

Collaboration Leading to Effective Instruction

AGENDA

Time	Topic	Speaker
8:00 AM	Coffee and Conversation	
8:30 AM	Superintendent's Message	Dr. Steve Atwater
9:00 AM	5-Year Plan	Dr. Steve Atwater
10:15 AM	Collaboration	DIT
11:00 AM	Effective Leadership	DIT
12:00 PM	Lunch	Provided
1:00 PM	Effective Instruction	DIT
3:15 PM	Administrivia	District Administration
3:45 PM	Wrap Up	Sean Dusek
4:00 PM	Dismissal	

***Please bring laptops**